

4E-BP1 (Phospho Thr37/46) Rabbit mAb (AR1951)

Key Features

Host Species:	Rabbit
Reactivity:	Human, Mouse, Rat
Applications:	WB, IF, ELISA
Isotype:	IgG, Kappa
MW:	13kDa (Calculated) 15-20kDa (Observed)

Recommended Dilution Ratios

WB:	1:2000-10000
IF:	1:200-1000
ELISA:	1:5000-20000

Storage

-15°C to -25°C/1 year (Do not lower than -25°C)

Basic Information

Clonality	Monoclonal
-----------	------------

Immunogen Information

Specificity	Endogenous
-------------	------------

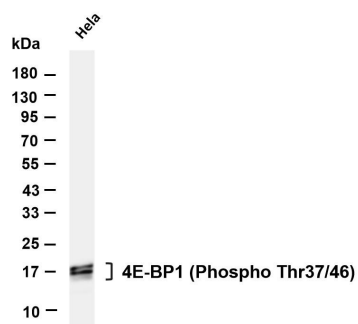
Target Information

Gene name	EIF4EBP1
Protein Name	Eukaryotic translation initiation factor 4E-binding protein 1

Organism	Gene ID	UniProt ID
Human	1978	Q13541
Mouse	13685	Q60876
Rat	116636	Q62622

Cellular Localization	Nucleus
Tissue specificity	Colon, Epithelium, Lung, Placenta, Platelet

Validation Data



Various whole cell lysates were separated by 4-20% SDS-PAGE, and the membrane was blotted with anti-4E-BP1 (Phospho Thr37/46) antibody. The HRP-conjugated Goat anti-Rabbit IgG (H + L) antibody was used to detect the antibody.

Lane 1: HeLa serum was starved overnight and treated with insulin(100nM) for 5 minutes

Predicted band size: 13kDa

Observed band size: 15-20kDa

For Research Use Only