

# MYL9 (Phospho Thr18/Ser19)

## Rabbit mAb (AR1950)

### Key Features

Host Species:	Rabbit
Reactivity:	Human,Mouse,Rat
Applications:	WB,IHC,IF,ELISA
Isotype:	IgG,Kappa
MW:	20kDa (Calculated) 20kDa (Observed)

### Recommended Dilution Ratios

IHC:	1:50-400
WB:	1:1000-5000
IF:	1:200-1000
ELISA:	1:5000-20000

### Storage

-15°C to -25°C/1 year (Do not lower than -25°C)

### Basic Information

Clonality	Monoclonal
-----------	------------

### Immunogen Information

Specificity	Endogenous
-------------	------------

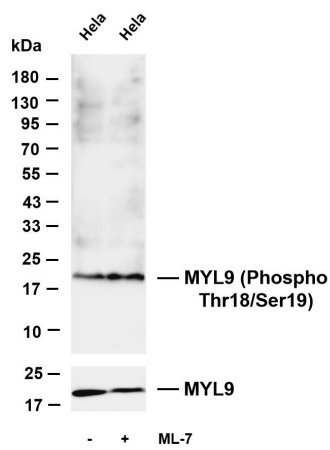
### Target Information

Gene name	MYL9
Protein Name	Myosin regulatory light polypeptide 9

Organism	Gene ID	UniProt ID
Human	10398; 10627	P24844
Mouse	98932	Q9CQ19
Rat	296313	Q64122

Cellular Localization	Cytoplasm, cytoskeleton. Cytoplasm, cell cortex. Colocalizes with F-actin, MYH9 and PIEZO1 at the actomyosin cortex in myoblasts. .
Tissue specificity	Smooth muscle tissues and in some, but not all, nonmuscle cells.

# Validation Data



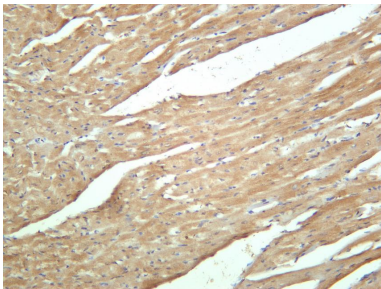
Various whole cell lysates were separated by 4-20% SDS-PAGE, and the membrane was blotted with anti-MYL9 (Phospho Thr18/Ser19) antibody. The HRP-conjugated Goat anti-Rabbit IgG (H + L) antibody was used to detect the antibody.

Lane 1: HeLa

Lane 2: HeLa was treated with ML-7(75uM) for 30 minutes

Predicted band size: 20kDa

Observed band size: 20kDa



Mouse cardiac muscle was stained with anti-MYL9 (Phospho Thr18/Ser19) rabbit antibody.

For Research Use Only