

IGF-IR (pTyr1135/6)/ INSR β (pTyr1150/1) Rabbit mAb (AR1949)

Key Features

Host Species:	Rabbit
Reactivity:	Human, Mouse, Rat
Applications:	WB, IF, ELISA
Isotype:	IgG, Kappa
MW:	156kDa (Calculated) 95kDa (Observed)

Recommended Dilution Ratios

WB:	1:2000-10000
IF:	1:200-1000
ELISA:	1:5000-20000

Storage

-15°C to -25°C/1 year (Do not lower than -25°C)

Basic Information

Clonality	Monoclonal
-----------	------------

Immunogen Information

Specificity	Endogenous
-------------	------------

Target Information

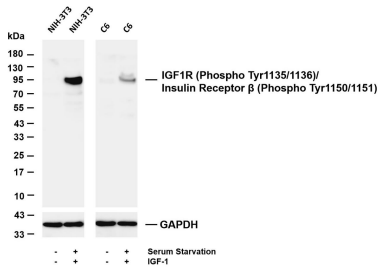
Gene name	IGF1R
Protein Name	Insulin-like growth factor 1 receptor

Organism	Gene ID	UniProt ID
Human	3480; 3643	P08069; P06213
Mouse	16001; 16337	
Rat	25718	P24062; P15127

Cellular Localization	Cell membrane; Single-pass type I membrane protein.
Tissue specificity	Found as a hybrid receptor with INSR in muscle, heart, kidney, adipose tissue, skeletal muscle, hepatoma, fibroblasts, spleen and placenta (at protein level). Expressed in a variety of tissues.

Overexpressed in tumors, including melanomas, cancers of the colon, pancreas prostate and kidney.

Validation Data



Various whole cell lysates were separated by 4-20% SDS-PAGE, and the membrane was blotted with anti-IGF1 Receptor (Phospho Tyr1135/1136)/Insulin Receptor (Phospho Tyr1150/1151) antibody. The HRP-conjugated Goat anti-Rabbit IgG (H + L) antibody was used to detect the antibody.

Lane 1: NIH-3T3

Lane 2: NIH-3T3 serum was starved for 24 hours and then treated with IGF-1 (100ng/ml) for 20 minutes

Lane 3: C6

Lane 4: C6 serum was starved for 24 hours and then treated with IGF-1 (100ng/ml) for 20 minutes

Predicted band size: 156kDa

Observed band size: 95kDa

For Research Use Only