

## IRF3 (Phospho Ser396) Rabbit mAb (AR1947)

### Key Features

Host Species:	Rabbit
Reactivity:	Human, Mouse
Applications:	WB, IF, ELISA
Isotype:	IgG, Kappa
MW:	47kDa (Calculated) 60kDa (Observed)

### Recommended Dilution Ratios

WB:	1:500-2000
IF:	1:200-1000
ELISA:	1:5000-20000

### Storage

-15°C to -25°C/1 year (Do not lower than -25°C)

### Basic Information

Clonality	Monoclonal
-----------	------------

### Immunogen Information

Specificity	Endogenous
-------------	------------

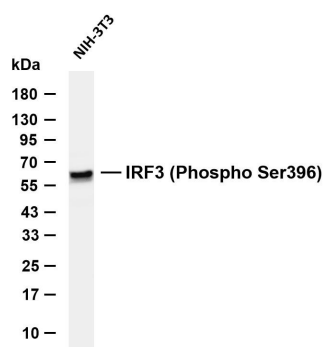
### Target Information

Gene name	IRF3
Protein Name	Interferon regulatory factor 3

Organism	Gene ID	UniProt ID
Human	3661	Q14653
Mouse	54131	P70671

Cellular Localization	Cytoplasm. Nucleus. Mitochondrion. Shuttles between cytoplasmic and nuclear compartments, with export being the prevailing effect (PubMed:10805757). When activated, IRF3 interaction with CREBBP prevents its export to the cytoplasm (PubMed:10805757). Recruited to mitochondria via TOMM70:HSP90AA1 upon Sendai virus infection (PubMed:25609812).
Tissue specificity	Expressed constitutively in a variety of tissues.

## Validation Data



Various whole cell lysates were separated by 4-8% SDS-PAGE, and the membrane was blotted with anti-IRF3 (Phospho Ser396) antibody. The HRP-conjugated Goat anti-Rabbit IgG (H + L) antibody was used to detect the antibody.

Lane 1: NIH-3T3

Predicted band size: 47kDa

Observed band size: 60kDa

For Research Use Only