

Smad2 (Phospho Ser465/467) Rabbit mAb (AR1946)

Key Features

Host Species:	Rabbit
Reactivity:	Human,Mouse,Rat
Applications:	WB,IF,ELISA
Isotype:	IgG,Kappa
MW:	52kDa (Calculated) 60kDa (Observed)

Recommended Dilution Ratios

WB:	1:500-2000
IF:	1:200-1000
ELISA:	1:5000-20000

Storage

-15°C to -25°C/1 year (Do not lower than -25°C)

Basic Information

Clonality	Monoclonal
-----------	------------

Immunogen Information

Specificity	Endogenous
-------------	------------

Target Information

Gene name	SMAD2 MADH2 MADR2
Protein Name	Smad2 (Ser465/467)

Organism	Gene ID	UniProt ID
Human	4087	Q15796
Mouse	17126	Q62432
Rat	29357	O70436

Cellular Localization

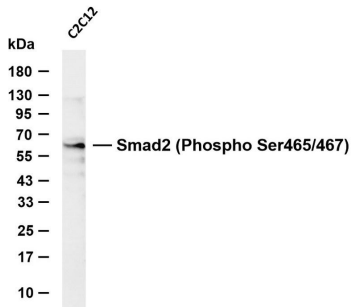
Cytoplasm. Nucleus. Cytoplasmic and nuclear in the absence of TGF-beta. On TGF-beta stimulation, migrates to the nucleus when complexed with SMAD4 (PubMed:9865696, PubMed:21145499). On dephosphorylation by phosphatase PPM1A, released from the SMAD2/SMAD4 complex, and exported out of the nucleus by interaction with RANBP1 (PubMed:16751101, PubMed:19289081).

Localized mainly to the nucleus in the early stages of embryo development with expression becoming evident in the cytoplasm at the blastocyst and epiblast stages (By similarity). .

Expressed at high levels in skeletal muscle, endothelial cells, heart and placenta.

Tissue specificity

Validation Data



Various whole cell lysates were separated by 4-20% SDS-PAGE, and the membrane was blotted with anti-Smad2 (Phospho Ser465/467) antibody. The HRP-conjugated Goat anti-Rabbit IgG (H + L) antibody was used to detect the antibody.

Lane 1: C2C12 serum was starved overnight and treated with TGF β 3(10ng/ml) for 20 minutes

Predicted band size: 52kDa

Observed band size: 60kDa

For Research Use Only