

ErbB-3 (Phospho Tyr1289) Rabbit mAb (AR1944)

Key Features

Host Species:	Rabbit
Reactivity:	Human,Mouse,Rat
Applications:	WB,IHC,IF,IP,ELISA
Isotype:	IgG,Kappa
MW:	148kDa (Calculated) 185kDa (Observed)

Recommended Dilution Ratios

IHC:	1:200-1000
WB:	1:2000-10000
IF:	1:200-1000
ELISA:	1:5000-20000
IP:	1:50-200

Storage

-15°C to -25°C/1 year (Do not lower than -25°C)

Basic Information

Clonality	Monoclonal
-----------	------------

Immunogen Information

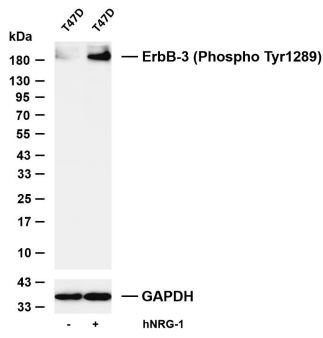
Specificity	Endogenous
-------------	------------

Target Information

Gene name	ERBB3
Protein Name	Receptor tyrosine-protein kinase erbB-3

	Organism	Gene ID	UniProt ID
	Human	2065	P21860
	Mouse	13867	Q61526
	Rat	29496	Q62799
Cellular Localization	[Isoform 1]: Cell membrane; Single-pass type I membrane protein.; [Isoform 2]: Secreted		
Tissue specificity	Epithelial tissues and brain.		

Validation Data



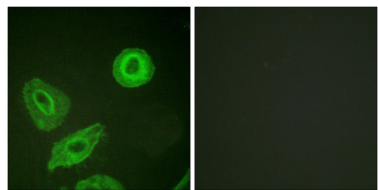
Various whole cell lysates were separated by 4-20% SDS-PAGE, and the membrane was blotted with anti-ErbB-3 (Phospho Tyr1289) antibody. The HRP-conjugated Goat anti-Rabbit IgG (H + L) antibody was used to detect the antibody.

Lane 1: T47D

Lane 2: T47D was treated with hNRG-1(100ng/ml) for 15 minutes

Predicted band size: 148kDa

Observed band size: 185kDa



Immunofluorescence analysis of HeLa cells, using HER3 (Phospho-Tyr1289) Antibody. The picture on the right is blocked with the phospho peptide.

For Research Use Only