

Histone H4 (Acetyl Lys16) Rabbit mAb (AR1942)

Key Features

Host Species:	Rabbit
Reactivity:	Human, Mouse, Rat
Applications:	WB, IHC, IF, IP, ELISA, CHIP, Cut&Tag
Isotype:	IgG, Kappa
MW:	11kDa (Calculated) 11kDa (Observed)

Recommended Dilution Ratios

IHC:	1:200-1000
WB:	1:2000-10000
IF:	1:200-1000
ELISA:	1:5000-20000
IP:	1:50-200
CHIP	1:50-1:100
Cut&Tag	1:50-1:100

Storage -15°C to -25°C/1 year (Do not lower than -25°C)

Basic Information

Clonality Monoclonal

Immunogen Information

Specificity Endogenous

Target Information

Gene name HIST1H4A/HIST1H4B/HIST1H4C/HIST1H4D/HIST1H4E/HIST1H4F/HIST1H4G/HIST1H4I/HIST1H4J/HIST1H4K/HIST1H4L/HIST2H4A/HIST2H4B/HIST2H4C/HIST2H4D/HIST2H4E/HIST2H4F/HIST2H4G/HIST2H4H/HIST2H4I/HIST2H4J/HIST2H4K/HIST2H4L/HIST3H4A/HIST3H4B/HIST3H4C/HIST3H4D/HIST3H4E/HIST3H4F/HIST3H4G/HIST3H4H/HIST3H4I/HIST3H4J/HIST3H4K/HIST3H4L/HIST4H4

Protein Name Histone H4

Organism	Gene ID	UniProt ID
Human	121504; 554313; 8294; 8359; 8360; 8361; 8362; 8363; 8364; 8365; 8366;	P62805

8367; 8368; 8370

Mouse	100041230	P62806
Rat	100360950	P62804

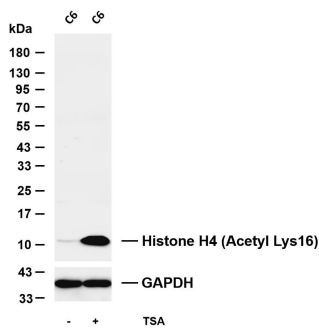
Cellular Localization

Nucleus. Chromosome

Tissue specificity

B-cell lymphoma, Bone marrow, Brain, Clones donated by HIP, Corpus call

Validation Data



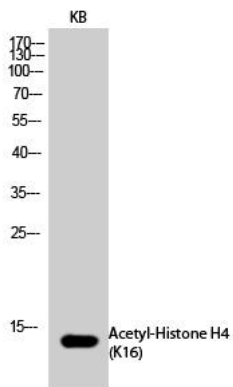
Various whole cell lysates were separated by 4-20% SDS-PAGE, and the membrane was blotted with anti-Histone H4 (Acetyl Lys16) antibody. The HRP-conjugated Goat anti-Rabbit IgG (H + L) antibody was used to detect the antibody.

Lane 1: C6

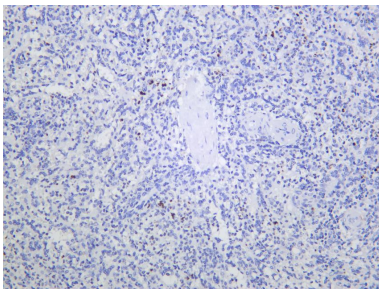
Lane 2: C6 was treated with TSA (500ng/mL) for 4 hours

Predicted band size: 11kDa

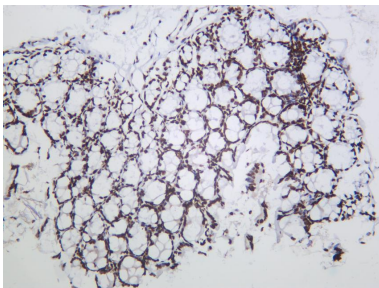
Observed band size: 11kDa



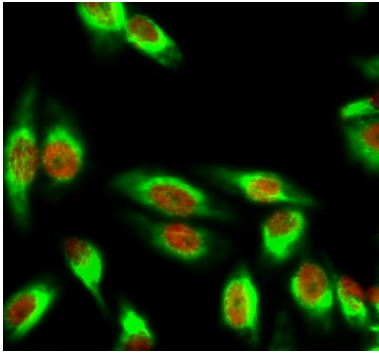
Western Blot analysis of KB cells using Acetyl-Histone H4 (Acetyl Lys16) antibody. Secondary antibody was diluted at 1:20000.



Human spleen was stained with anti-Histone H4 (Acetyl Lys16) Rabbit antibody.

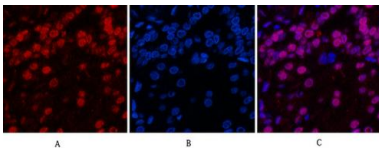


Mouse colon was stained with anti-Histone H4 (Acetyl Lys16) Rabbit antibody.



Immunofluorescence analysis of HeLa cell.

1. Histone H4 (Acetyl Lys16) Antibody(red) was diluted at 1:200(4 °C overnight). α -tubulin Monoclonal Antibody (green) was diluted at 1:200(4°C overnight).
2. Goat Anti Rabbit Alexa Fluor 594 was diluted at 1:1000(room temperature, 50min). Goat Anti Mouse Alexa Fluor 488 was diluted at 1:1000(room temperature, 50min).

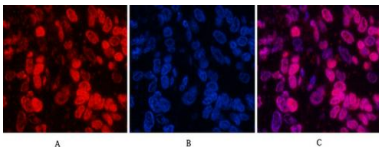


Immunofluorescence analysis of Human-kidney tissue.

1. Histone H4 (Acetyl Lys16) Antibody(red) was diluted at 1:200(4 °C, overnight).
2. Cy3 labeled Secondary antibody was diluted at 1:300(room temperature, 50min).
3. Picture B: DAPI(blue) 10min.

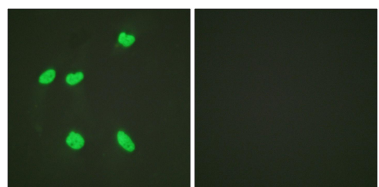
Picture A: Target. Picture B: DAPI. Picture C: merge of A+B

Immunofluorescence analysis of Human-lung-cancer tissue.



1. Histone H4 (Acetyl Lys16) Antibody(red) was diluted at 1:200(4 °C, overnight).
2. Cy3 labeled Secondary antibody was diluted at 1:300(room temperature, 50min).
3. Picture B: DAPI(blue) 10min.

Picture A: Target. Picture B: DAPI. Picture C: merge of A+B



Immunofluorescence analysis of HeLa cells, using Histone H4 (Acetyl-Lys16) Antibody. The picture on the right is blocked with the synthesized peptide.

For Research Use Only