

Cleaved Caspase-3 (Asp175)

Rabbit mAb (AR1935)

Key Features

Host Species:	Rabbit
Reactivity:	Human,Mouse,Rat
Applications:	WB,IHC,IF,IP,ELISA
Isotype:	IgG,Kappa
MW:	31kDa (Calculated) 31 kDa (Full Length),19 kDa (p19),17 kDa (p17) (Observed)

Recommended Dilution Ratios

IHC:	1:200-1000
WB:	1:1000-5000
IF:	1:200-1000
ELISA:	1:5000-20000
IP:	1:50-200

Storage -15°C to -25°C/1 year (Do not lower than -25°C)

Basic Information

Clonality Monoclonal

Immunogen Information

Specificity This antibody detects endogenous levels of Cleaved Caspase-3 (Asp175).

Target Information

Gene name CASP3
Protein Name Caspase3

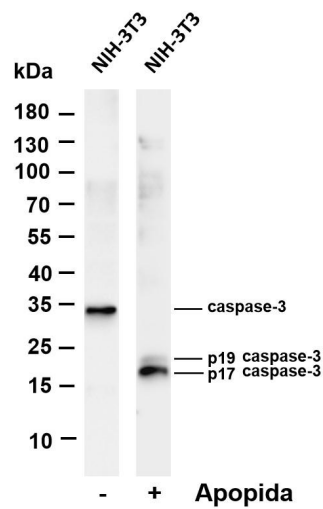
Organism	Gene ID	UniProt ID
Human	836;	P42574;
Mouse	12367	P70677
Rat	25402	P55213

Cellular Localization Cytoplasm

Tissue specificity

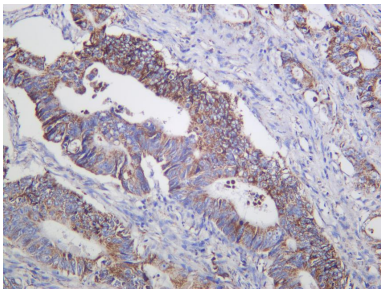
Highly expressed in lung, spleen, heart, liver and kidney. Moderate levels in brain and skeletal muscle, and low in testis. Also found in many cell lines, highest expression in cells of the immune system.

Validation Data

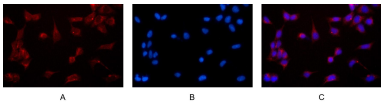


Various whole cell lysates were separated by 4-20% SDS-PAGE, and the membrane was blotted with anti-Cleaved Caspase-3 (Asp175) antibody. The HRP-conjugated Goat anti-Rabbit IgG(H + L) antibody was used to detect the antibody.

Lane 1: NIH-3T3
Lane 2: NIH-3T3 treated with Apopida
Predicted band size: 17,19kDa
Observed band size: 17,19kDa



Human colon carcinoma was stained with anti-Cleaved Caspase-3 (Asp175) Rabbit antibody.



Immunofluorescence analysis of HEK293.
Picture A: Cleaved Caspase-3 antibody (red).
Picture B: DAPI (blue).
Picture C: Merge of A+B

For Research Use Only