

CD68 Rabbit mAb (AR1934)

Key Features

Host Species:	Rabbit
Reactivity:	Human,Rat
Applications:	WB,IHC,IF,ELISA
Isotype:	IgG,Kappa
MW:	37kDa (Calculated) 100kDa (Observed)

Recommended Dilution Ratios

IHC:	1:500-2000
WB:	1:2000-10000
IF:	1:200-1000
ELISA:	1:5000-20000

Storage

-15°C to -25°C/1 year (Do not lower than -25°C)

Basic Information

Clonality	Monoclonal
-----------	------------

Immunogen Information

Specificity	Endogenous
-------------	------------

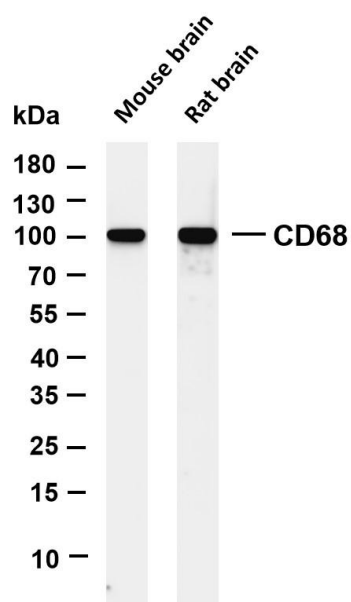
Target Information

Gene name	CD68
Protein Name	Macrosialin

Organism	Gene ID	UniProt ID
Human	968	P34810
Mouse	12514	P31996

Cellular Localization	Membrane Highly expressed by blood monocytes and tissue macrophages. Also expressed in lymphocytes, fibroblasts and endothelial cells.
Tissue specificity	Expressed in many tumor cell lines which could allow them to attach to selectins on vascular endothelium, facilitating their dissemination to secondary sites.

Validation Data



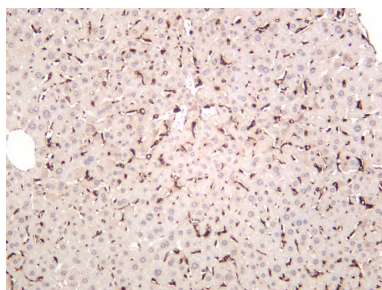
Various whole cell lysates were separated by 4-20% SDS-PAGE, and the membrane was blotted with anti-CD68 antibody. The HRP-conjugated Goat anti-Rabbit IgG(H + L) antibody was used to detect the antibody.

Lane 1: Mouse brain

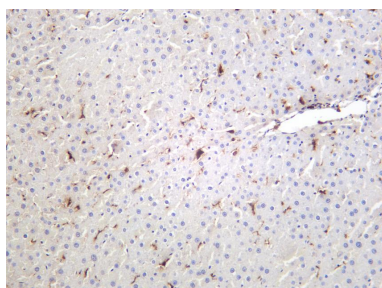
Lane 2: Rat brain

Predicted band size: 37kDa

Observed band size: 100kDa



Mouse liver was stained with anti-CD68 rabbit antibody.



Rat liver was stained with anti-CD68 rabbit antibody.

For Research Use Only