

DRP1 (Phospho Ser616) Rabbit mAb (AR1933)

Key Features

Host Species:	Rabbit
Reactivity:	Human,Mouse,Rat
Applications:	WB,IF,ELISA
Isotype:	IgG,Kappa
MW:	82kDa (Calculated) 82kDa (Observed)

Recommended Dilution Ratios

WB:	1:2000-10000
IF:	1:200-1000
ELISA:	1:5000-20000

Storage

-15°C to -25°C/1 year (Do not lower than -25°C)

Basic Information

Clonality	Monoclonal
-----------	------------

Immunogen Information

Specificity	Detects endogenous levels of DRP1 only when phosphorylated at Ser616(human, mouse), Ser637(Rat). The name of modified sites may be influenced by many factors, such as species (the modified site was not originally found in human samples) and the change of protein sequence (the previous protein sequence is incomplete, and the protein sequence may be prolonged with the development of protein sequencing technology). When naming, we will use the "numbers" in historical reference to keep the sites consistent with the reports. The antibody binds to the following modification sequence (lowercase letters are modification sites):PAsPQ
-------------	--

Target Information

Gene name	DNM1L
Protein Name	Dynamin-1-like protein

Organism	Gene ID	UniProt ID
Human	10059	O00429

Mouse	74006	Q8K1M6
Rat	114114	O35303

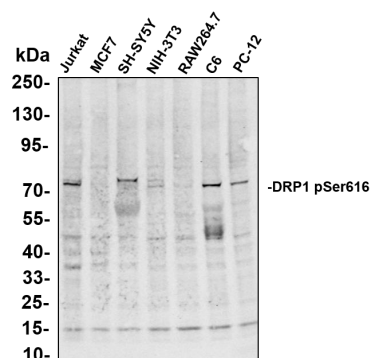
Cellular Localization

Cytoplasm. Nucleus. Cell membrane. The phosphorylated form shows localization to cytoplasm and cell membrane (PubMed:20937854). The MEMO1-RHOA-DIAPH1 signaling pathway controls localization of the phosphorylated form to the cell membrane (PubMed:20937854).

Tissue specificity

Expressed in testis, thymus, prostate and ovary and weakly expressed in lung, brain and kidney. Colocalizes with EIF2AK2/PKR and TAU in the Alzheimer disease (AD) brain.

Validation Data



Various whole cell lysates were separated by 4-20% SDS-PAGE, and the primary antibody was used at 4 °C, over night with a 1:5000 dilution. The Dylight 800-conjugated Goat anti-Rabbit antibody was used to detect the antibody.

Lane1: Jurkat

Lane2: MCF7

Lane3: SH-SY5Y

Lane4: NIH-3T3

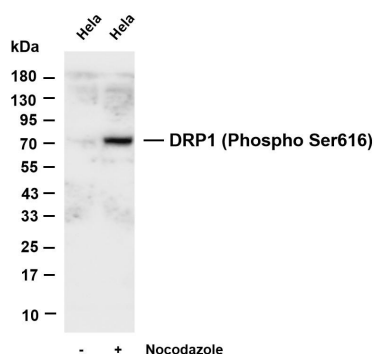
Lane5: RAW264.7

Lane6: C6

Lane7: PC-12

Predicted band size: 82kDa

Observed band size: 82kDa



Various whole cell lysates were separated by 4-20% SDS-PAGE, and the membrane was blotted with anti-DRP1 (Phospho Ser616) antibody. The HRP conjugated Goat anti-Rabbit IgG(H + L) antibody was used to detect the antibody.

Lane 1: HeLa

Lane 2: HeLa was treated with Nocodazole (50 ng/mL) for 20 hours

Predicted band size: 82kDa

Observed band size: 82kDa