

GSK3β Rabbit mAb (AR1932)

Key Features

Host Species:	Rabbit
Reactivity:	Human, Mouse, Rat
Applications:	WB, IHC, IF, IP, ELISA
Isotype:	IgG, Kappa
MW:	47kDa (Calculated) 47kDa (Observed)

Recommended Dilution Ratios

IHC:	1:200-1000
WB:	1:2000-10000
IF:	1:200-1000
ELISA:	1:5000-20000
IP:	1:50-200

Storage

-15°C to -25°C/1 year (Do not lower than -25°C)

Basic Information

Clonality	Monoclonal
-----------	------------

Immunogen Information

Specificity	Endogenous
-------------	------------

Target Information

Gene name	GSK3B
Protein Name	Glycogen synthase kinase-3 beta

Organism	Gene ID	UniProt ID
Human	2932	P49841
Mouse	56637	Q9WV60
Rat	84027	P18266

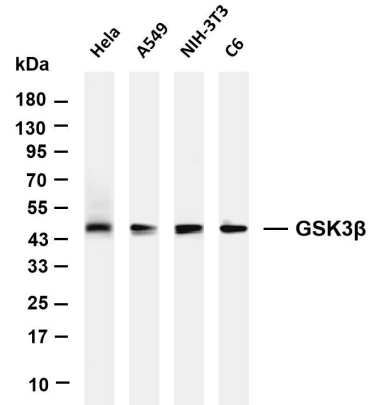
Cellular Localization	Cytoplasm. Nucleus. Cell membrane. The phosphorylated form shows localization to cytoplasm and cell membrane (PubMed:20937854). The MEMO1-RHOA-DIAPH1 signaling pathway controls localization of the phosphorylated form to the
-----------------------	---

cell membrane (PubMed:20937854).

Tissue specificity

Expressed in testis, thymus, prostate and ovary and weakly expressed in lung, brain and kidney. Colocalizes with EIF2AK2/PKR and TAU in the Alzheimer disease (AD) brain.

Validation Data



Various whole cell lysates were separated by 4-20% SDS-PAGE, and the membrane was blotted with anti-GSK3β antibody. The HRP-conjugated Goat anti-Rabbit IgG(H + L) antibody was used to detect the antibody.

Lane 1: HeLa

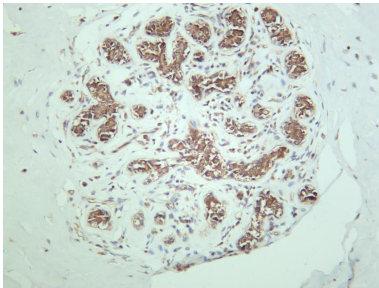
Lane 2: A549

Lane 3: NIH-3T3

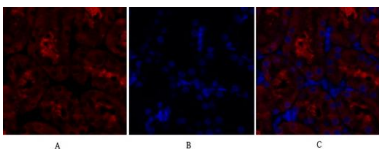
Lane 4: C6

Predicted band size: 47kDa

Observed band size: 47kDa



Human breast carcinoma was stained with anti-GSK3β rabbit antibody.



Immunofluorescence analysis of rat-kidney tissue.

1. GSK3β Monoclonal Antibody(red) was diluted at 1:200(4 °C, overnight).
2. Cy3 labeled Secondary antibody was diluted at 1:300(room temperature, 50min).
3. Picture B: DAPI(blue) 10min.

Picture A: Target. Picture B: DAPI. Picture C: merge of A+B

For Research Use Only