

Osteocalcin Rabbit mAb (AR1931)

Key Features

Host Species:	Rabbit
Reactivity:	Human, Mouse, Rat
Applications:	WB, IHC, IF, ELISA
Isotype:	IgG, Kappa
MW:	11kDa (Calculated) 22kDa (Observed)

Recommended Dilution Ratios

WB:	1:2000-10000
IHC:	1:100-500
IF:	1:200-1000
ELISA:	1:5000-20000

Storage

-15°C to -25°C/1 year (Do not lower than -25°C)

Basic Information

Clonality	Monoclonal
-----------	------------

Immunogen Information

Specificity	Endogenous
-------------	------------

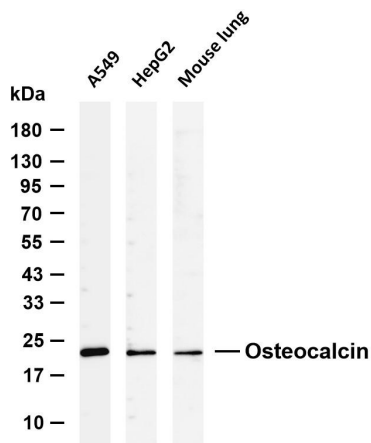
Target Information

Gene name	BGLAP
Protein Name	Osteocalcin (Bone Gla protein) (BGP) (Gamma-carboxyglutamic acid-containing protein)

Organism	Gene ID	UniProt ID
Human	632	P02818
Mouse		P86546
Rat		P04640

Cellular Localization	Secreted
Tissue specificity	Brain, Cerebellum, Colon, Lung carcinoma, Skin, Testis, Uterus

Validation Data



Various whole cell lysates were separated by 4-8% SDS-PAGE, and the membrane was blotted with anti-Osteocalcin antibody. The HRP-conjugated Goat anti-Rabbit IgG (H + L) antibody was used to detect the antibody.

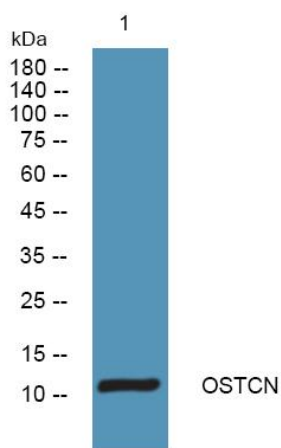
Lane 1: A549

Lane 2: HepG2

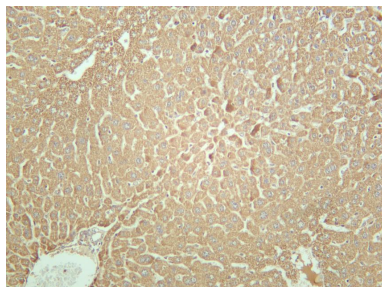
Lane 3: Mouse lung

Predicted band size: 11kDa

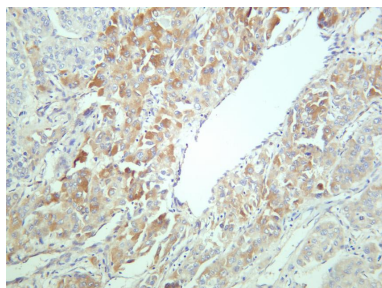
Observed band size: 22kDa



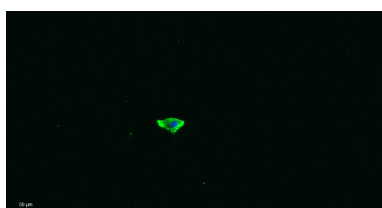
Western blot analysis of lysates from KB cells, primary antibody was diluted at 1:1000, 4°C overnight.



Mouse liver was stained with anti-Osteocalcin rabbit antibody.



Human hepatocellular carcinoma was stained with anti-Osteocalcin rabbit antibody.



Immunofluorescence analysis of A549.

1. primary Antibody was diluted at 1:200(4°C overnight).
2. Goat Anti Rabbit IgG (H&L) - Alexa Fluor 488 Secondary antibody was diluted at 1:1000(room temperature, 50min).
3. DAPI(blue) 10min.