

## MCP-1 Rabbit mAb (AR1930)

### Key Features

Host Species:	Rabbit
Reactivity:	Human
Applications:	WB,IHC,IF,IP,ELISA
Isotype:	IgG,Kappa
MW:	11kDa (Calculated) 11kDa (Observed)

### Recommended Dilution Ratios

IHC:	1:2000-10000
WB:	1:1000-5000
IF:	1:200-1000
ELISA:	1:5000-20000
IP:	1:50-200

### Storage

-15°C to -25°C/1 year (Do not lower than -25°C)

### Basic Information

Clonality	Monoclonal
-----------	------------

### Immunogen Information

Specificity	Endogenous
-------------	------------

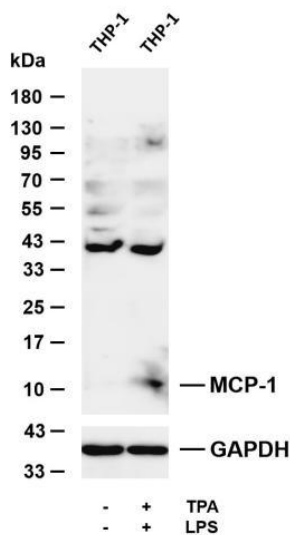
### Target Information

Gene name	MCP1, SCYA2, CCL2
Protein Name	MCP1; Monocyte chemoattractant protein 1; Monocyte chemotactic protein 1; Monocyte secretory protein JE

Organism	Gene ID	UniProt ID
Human	6347	P13500

Cellular Localization	Secreted
Tissue specificity	Expressed in the seminal plasma, endometrial fluid and follicular fluid (at protein level), monocytes.

Validation Data



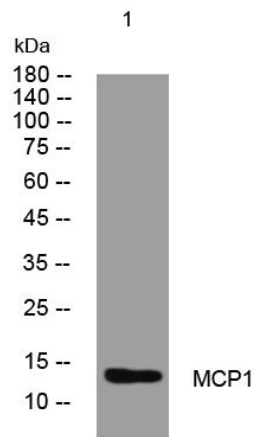
Various whole cell lysates were separated by 4-20% SDS-PAGE, and the membrane was blotted with anti-MCP-1 antibody. The HRP-conjugated Goat anti-Rabbit IgG (H + L) antibody was used to detect the antibody.

Lane 1: THP-1

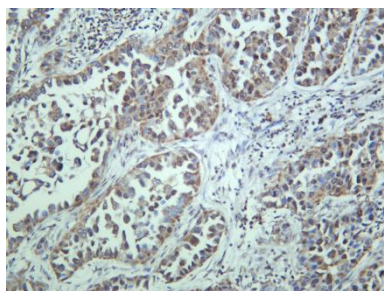
Lane 2: THP-1 treated with TPA(80nM) overnight and then treated with LPS(1µg/mL) for 1 hour

Predicted band size: 11kDa

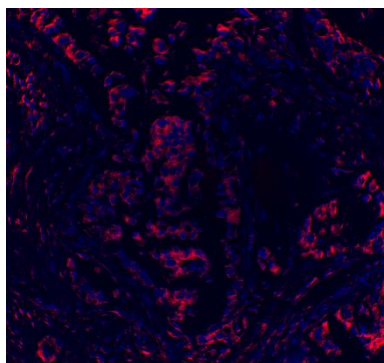
Observed band size: 11kDa



Western blot analysis of lysates from HeLa cells, primary antibody was diluted at 1:1000, 4°C overnight.



Human lung adenocarcinoma was stained with anti-MCP-1 rabbit antibody.



Immunofluorescence analysis of Human lung adenocarcinoma.