

Rb Rabbit mAb (AR1929)

Key Features

| | |
|---------------|--|
| Host Species: | Rabbit |
| Reactivity: | Human, Mouse |
| Applications: | WB, IF, IP, ELISA |
| Isotype: | IgG, Kappa |
| MW: | 106kDa (Calculated) 110kDa (Observed) |

Recommended Dilution Ratios

| | |
|--------|--------------|
| WB: | 1:2000-10000 |
| IF: | 1:200-1000 |
| ELISA: | 1:5000-20000 |
| IP: | 1:50-200 |

Storage

-15°C to -25°C/1 year (Do not lower than -25°C)

Basic Information

| | |
|-----------|------------|
| Clonality | Monoclonal |
|-----------|------------|

Immunogen Information

| | |
|-------------|------------|
| Specificity | Endogenous |
|-------------|------------|

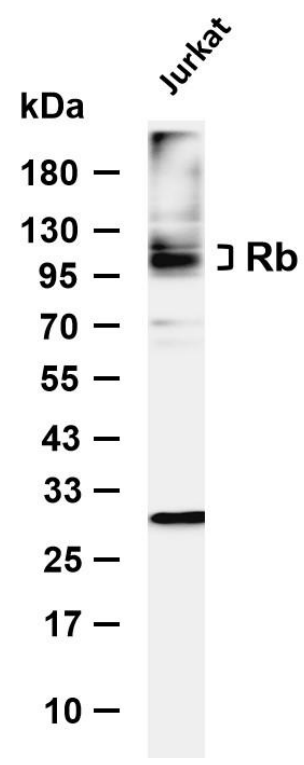
Target Information

| | |
|--------------|-----------------------------------|
| Gene name | RB1 |
| Protein Name | Retinoblastoma-associated protein |

| Organism | Gene ID | UniProt ID |
|----------|---------|------------|
| Human | 5925 | P06400 |
| Mouse | 19645 | P13405 |

| | |
|-----------------------|---|
| Cellular Localization | Nucleus. During keratinocyte differentiation, acetylation by KAT2B/PCAF is required for nuclear localization. |
| Tissue specificity | Expressed in the retina. Expressed in foreskin keratinocytes (at protein level) (PubMed:20940255) |

Validation Data

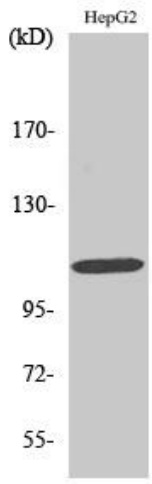


Various whole cell lysates were separated by 4-8% SDS-PAGE, and the membrane was blotted with anti-Rb antibody. The HRP-conjugated Goat anti Rabbit IgG (H + L) antibody was used to detect the antibody.

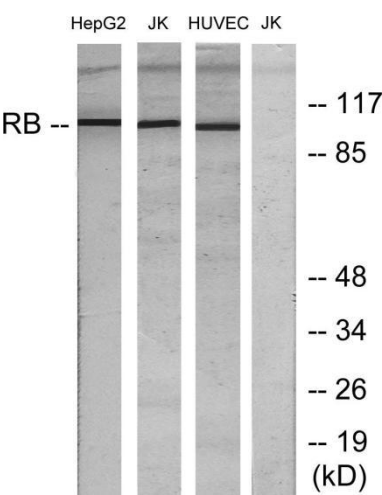
Lane 1: Jurkat

Predicted band size: 106kDa

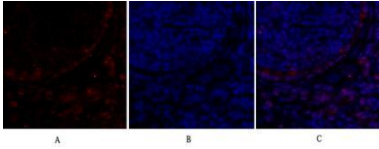
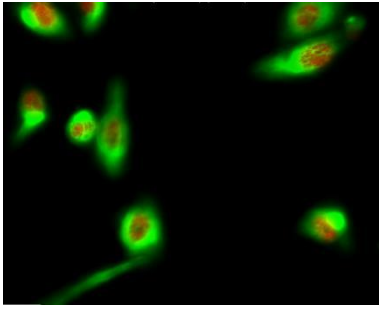
Observed band size: 110kDa



Western Blot analysis of various cells using Rb Antibody diluted at 1:1000.



Western blot analysis of lysates from HepG2, Jurkat, and HUVEC cells, using Retinoblastoma Antibody. The lane on the right is blocked with the synthesized peptide.



Immunofluorescence analysis of Hela cell.

1. Rb Antibody(red) was diluted at 1:200(4 °C overnight). Kif 7 Monoclonal Antibody (green) was diluted at 1:200(4 °C overnight).
2. Goat Anti Rabbit Alexa Fluor 594 was diluted at 1:1000(room temperature, 50min). Goat Anti Mouse Alexa Fluor 488 was diluted at 1:1000(room temperature, 50min).

Immunofluorescence analysis of mouse-lung tissue.

1. Rb Antibody(red) was diluted at 1:200(4°C, overnight).
2. Cy3 labled Secondary antibody was diluted at 1:300(room temperature, 50min).
3. Picture B: DAPI(blue) 10min.

Picture A: Target. Picture B: DAPI. Picture C: merge of A+B

For Research Use Only