

MyD88 Rabbit mAb (AR1926)

Key Features

Host Species:	Rabbit
Reactivity:	Human,Mouse,Rat
Applications:	WB,IF,IP,ELISA
Isotype:	IgG,Kappa
MW:	33kDa (Calculated) 33kDa (Observed)

Recommended Dilution Ratios

WB:	1:2000-10000
IF:	1:200-1000
ELISA:	1:5000-20000
IP:	1:50-200

Storage

-15°C to -25°C/1 year (Do not lower than -25°C)

Basic Information

Clonality	Monoclonal
-----------	------------

Immunogen Information

Specificity	Endogenous
-------------	------------

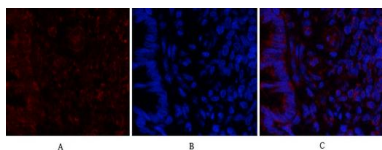
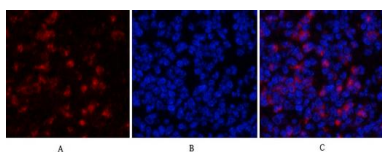
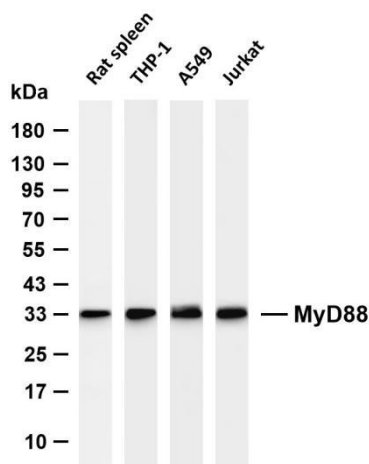
Target Information

Gene name	MyD88
Protein Name	Myeloid differentiation primary response protein MyD88

Organism	Gene ID	UniProt ID
Human	4615	Q99836
Mouse	17874	P22366
Rat	301059	Q6Y1S1

Cellular Localization	Cytoplasm. Nucleus
Tissue specificity	Ubiquitous

Validation Data



Various whole cell lysates were separated by 4-20% SDS-PAGE, and the membrane was blotted with anti-MyD88 antibody. The HRP conjugated Goat anti-Rabbit IgG (H + L) antibody was used to detect the antibody.

Lane 1: Rat spleen

Lane 2: THP-1

Lane 3: A549

Lane 4: Jurkat

Predicted band size: 33kDa

Observed band size: 33kDa

Immunofluorescence analysis of mouse-spleen tissue.

1. MyD88 Antibody(red) was diluted at 1:200(4°C, overnight).
2. Cy3 labeled Secondary antibody was diluted at 1:300(room temperature, 50min).
3. Picture B: DAPI(blue) 10min.

Picture A: Target. Picture B: DAPI. Picture C: merge of A+B

Immunofluorescence analysis of rat-lung tissue.

1. MyD88 Antibody(red) was diluted at 1:200(4°C, overnight).
2. Cy3 labeled Secondary antibody was diluted at 1:300(room temperature, 50min).
3. Picture B: DAPI(blue) 10min.

Picture A: Target. Picture B: DAPI. Picture C: merge of A+B

For Research Use Only