

LDLR Rabbit mAb (AR1925)

Key Features

Host Species:	Rabbit
Reactivity:	Human, Mouse, Rat
Applications:	WB, IHC, IF, ELISA
Isotype:	IgG, Kappa
MW:	95kDa (Calculated) 130kDa (Observed)

Recommended Dilution Ratios

IHC:	1:1000-4000
WB:	1:2000-10000
IF:	1:200-1000
ELISA:	1:5000-20000

Storage

-15°C to -25°C/1 year (Do not lower than -25°C)

Basic Information

Clonality	Monoclonal
-----------	------------

Immunogen Information

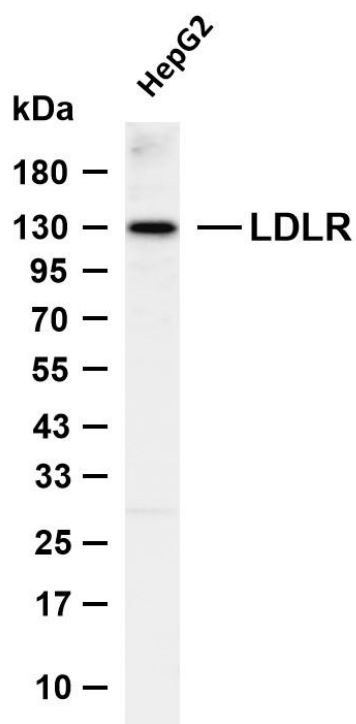
Specificity	Endogenous
-------------	------------

Target Information

Gene name	LDLR
Protein Name	Low-density lipoprotein receptor (LDL receptor)

	Organism	Gene ID	UniProt ID
	Human	3949	P01130
	Mouse		P35951
	Rat		P35952
Cellular Localization	Cell membrane; Single-pass type I membrane protein. Membrane, clathrin-coated pit. Golgi apparatus. Early endosome. Late endosome. Lysosome. Rapidly endocytosed upon ligand binding. .		
Tissue specificity	Brain, Liver, Lymph, Plasma		

Validation Data

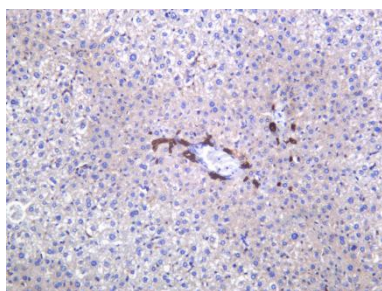


Various whole cell lysates were separated by 4-20% SDS-PAGE, and the membrane was blotted with anti-LDLR antibody. The HRP conjugated Goat anti-Rabbit IgG (H + L) antibody was used to detect the antibody.

Lane 1: HepG2

Predicted band size: 95kDa

Observed band size: 130kDa



Mouse liver was stained with anti-LDLR rabbit antibody.

For Research Use Only