

SCD Rabbit mAb (AR1923)

Key Features

Host Species:	Rabbit
Reactivity:	Human, Mouse
Applications:	WB, IHC, IF, ELISA
Isotype:	IgG, Kappa
MW:	42kDa (Calculated) 37kDa (Observed)

Recommended Dilution Ratios

IHC:	1:200-1000
WB:	1:2000-10000
IF:	1:200-1000
ELISA:	1:5000-20000

Storage

-15°C to -25°C/1 year (Do not lower than -25°C)

Basic Information

Clonality	Monoclonal
-----------	------------

Immunogen Information

Specificity	Endogenous
-------------	------------

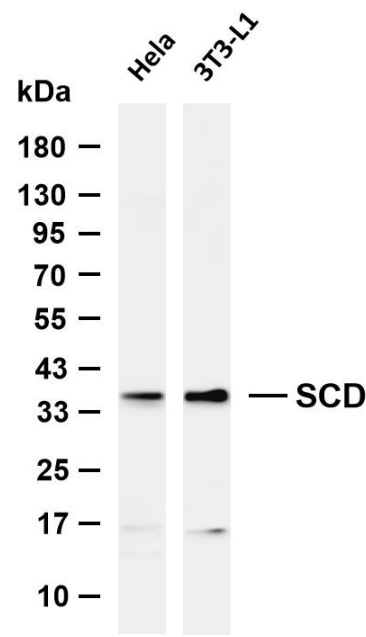
Target Information

Gene name	SCD
Protein Name	Acyl-CoA desaturase (Delta(9)-desaturase) (Delta-9 desaturase) (Fatty acid desaturase) (Stearoyl-CoA desaturase)

Organism	Gene ID	UniProt ID
Human	6319	O00767

Cellular Localization	Endoplasmic reticulum membrane; Multi-pass membrane protein
Tissue specificity	Detected in fetal liver, lung and brain. Highly expressed in adult adipose tissue, and at lower levels in adult brain and lung.

Validation Data



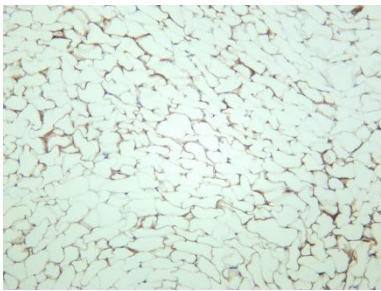
Various whole cell lysates were separated by 4-20% SDS-PAGE, and the membrane was blotted with anti-SCD antibody. The HRP conjugated Goat anti-Rabbit IgG (H + L) antibody was used to detect the antibody.

Lane 1: HeLa

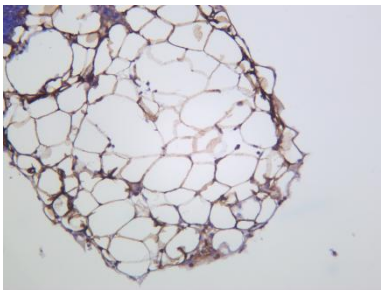
Lane 2: 3T3-L1

Predicted band size: 42kDa

Observed band size: 37kDa



Rat adipose was stained with anti-SCD Rabbit antibody.



Mouse adipose was stained with anti-SCD Rabbit antibody.