

IKK β Rabbit mAb (AR1919)

Key Features

Host Species:	Rabbit
Reactivity:	Human, Mouse, Rat
Applications:	WB, IF, IP, ELISA
Isotype:	IgG, Kappa
MW:	87kDa (Calculated) 87kDa (Observed)

Recommended Dilution Ratios

WB:	1:2000-10000
IF:	1:200-1000
ELISA:	1:5000-20000
IP:	1:50-200

Storage

-15°C to -25°C/1 year (Do not lower than -25°C)

Basic Information

Clonality	Monoclonal
-----------	------------

Immunogen Information

Specificity	Endogenous
-------------	------------

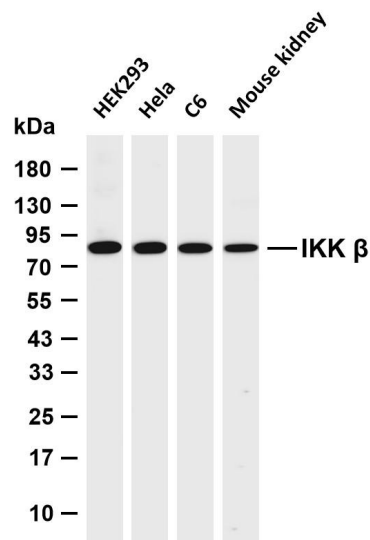
Target Information

Gene name	IKBKB
Protein Name	Inhibitor of nuclear factor kappa-B kinase subunit beta

Organism	Gene ID	UniProt ID
Human	3551	O14920
Mouse	16150	O88351
Rat	84351	Q9QY78

Cellular Localization	Cytoplasm. Nucleus. Membrane raft. Colocalized with DPP4 in membrane rafts. .
Tissue specificity	Highly expressed in heart, placenta, skeletal muscle, kidney, pancreas, spleen, thymus, prostate, testis and peripheral blood

Validation Data



Various whole cell lysates were separated by 4-20% SDS-PAGE, and the membrane was blotted with anti-IKK β antibody. The HRP conjugated Goat anti-Rabbit IgG (H + L) antibody was used to detect the antibody.

Lane 1: HEK293

Lane 2: Hela

Lane 3: C6

Lane 4: Mouse kidney

Predicted band size: 87kDa

Observed band size: 87kDa

For Research Use Only