

AIM2 Rabbit mAb (AR1918)

Key Features

Host Species:	Rabbit
Reactivity:	Human, Mouse, Rat
Applications:	WB, IHC, IF, ELISA
Isotype:	IgG, Kappa
MW:	39kDa (Calculated) 43kDa (Observed)

Recommended Dilution Ratios

IHC:	1:200-1000
WB:	1:2000-10000
IF:	1:200-1000
ELISA:	1:5000-20000

Storage

-15°C to -25°C/1 year (Do not lower than -25°C)

Basic Information

Clonality	Monoclonal
-----------	------------

Immunogen Information

Specificity	Endogenous
-------------	------------

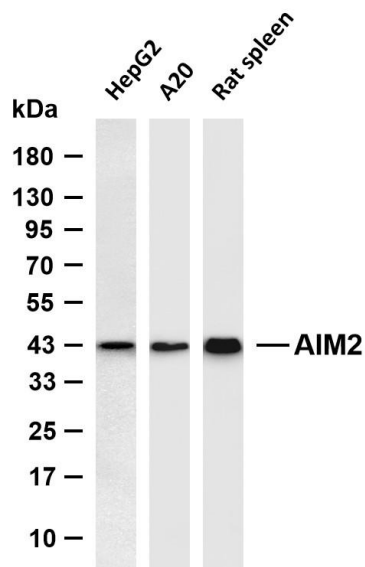
Target Information

Gene name	AIM2
Protein Name	Interferon-inducible protein AIM2

Organism	Gene ID	UniProt ID
Human	9447	O14862
Mouse		Q91VJ1

Cellular Localization	Nucleus. Cytoplasm. Activated inflammasomes can aggregate in the cytosol as speck-like particles
Tissue specificity	Expressed in spleen, small intestine, peripheral blood leukocytes, and testis.

Validation Data



Various whole cell lysates were separated by 4-20% SDS-PAGE, and the membrane was blotted with anti-AIM2 antibody. The HRP conjugated Goat anti-Rabbit IgG (H + L) antibody was used to detect the antibody.

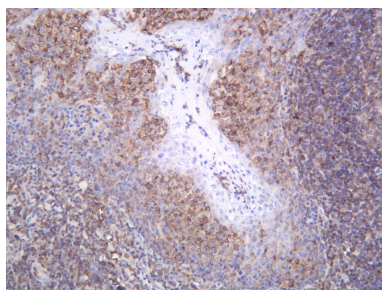
Lane 1: HepG2

Lane 2: A20

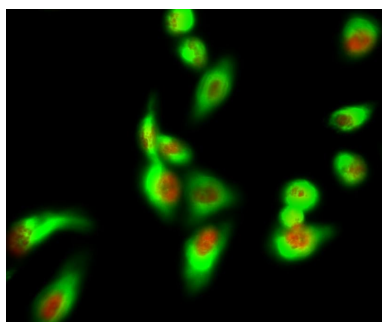
Lane 3: Rat spleen

Predicted band size: 39kDa

Observed band size: 43kDa



Human tonsil was stained with anti-AIM2 Rabbit antibody



Immunofluorescence analysis of HeLa cell.

1. AIM2 Antibody(red) was diluted at 1:200(4°C overnight). HSP70 Monoclonal Antibody (green) was diluted at 1:200 (4 °C overnight).
2. Goat Anti Rabbit Alexa Fluor 594 was diluted at 1:1000(room temperature, 50min). Goat Anti Mouse Alexa Fluor 488 was diluted at 1:1000(room temperature, 50min).

For Research Use Only