

NMDAR2B Rabbit mAb (AR1917)

Key Features

Host Species:	Rabbit
Reactivity:	Human,Mouse,Rat
Applications:	WB,IF,ELISA
Isotype:	IgG,Kappa
MW:	166kDa (Calculated) 190kDa (Observed)

Recommended Dilution Ratios

WB:	1:2000-10000
IF:	1:200-1000
ELISA:	1:5000-20000

Storage

-15°C to -25°C/1 year (Do not lower than -25°C)

Basic Information

Clonality	Monoclonal
-----------	------------

Immunogen Information

Specificity	Endogenous
-------------	------------

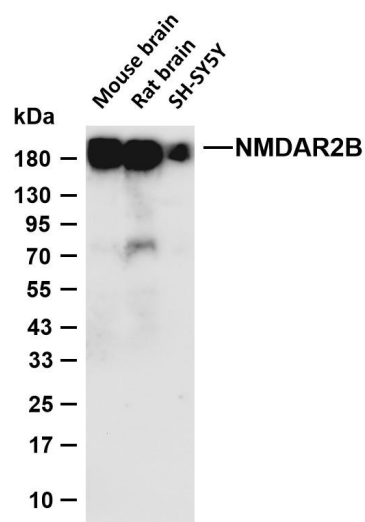
Target Information

Gene name	GRIN2B
Protein Name	Glutamate [NMDA] receptor subunit epsilon-2

Organism	Gene ID	UniProt ID
Human	2904	Q13224
Mouse	14812	Q01097
Rat	24410	Q00960

Cellular Localization	Cell membrane; Multi-pass membrane protein. Cell junction, synapse, postsynaptic cell membrane; Multi-pass membrane protein. Late endosome. Lysosome. Cytoplasm, cytoskeleton. Co-localizes with the motor protein KIF17 along microtubules. .
Tissue specificity	Primarily found in the fronto-parieto-temporal cortex and hippocampus pyramidal cells, lower expression in the basal ganglia.

Validation Data



Various whole cell lysates were separated by 4-20% SDS-PAGE, and the membrane was blotted with anti-NMDAR2B antibody. The HRP conjugated Goat anti-Rabbit IgG (H + L) antibody was used to detect the antibody.

Lane 1: Mouse brain

Lane 2: Rat brain

Lane 3: SH-SY5Y

Predicted band size: 166kDa

Observed band size: 190kDa

For Research Use Only