

BAT5 Rabbit mAb (AR1912)

Key Features

Host Species:	Rabbit
Reactivity:	Human, Mouse, Rat
Applications:	WB
Isotype:	IgG, Kappa
MW:	63kDa (Calculated) 63kDa (Observed)

Recommended Dilution Ratios

WB:	1:1000-5000
-----	-------------

Storage

-15°C to -25°C/1 year (Do not lower than -25°C)

Basic Information

Clonality	Monoclonal
-----------	------------

Immunogen Information

Specificity	Endogenous
-------------	------------

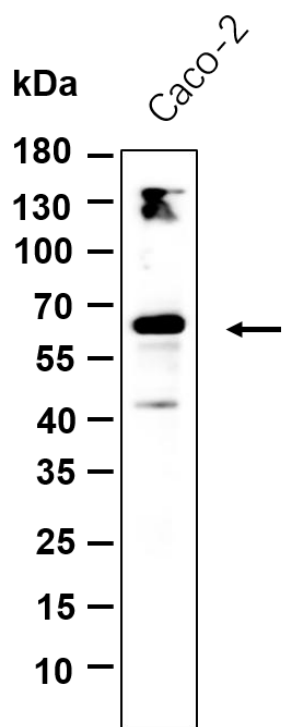
Target Information

Gene name	ABHD16A, BAT5, G5, NG26, PP199
Protein Name	Phosphatidylserine lipase ABHD16A (EC 3.1.-.-) (Alpha/beta hydrolase domain-containing protein 16A) (Abhydrolase domain-containing protein 16A) (HLA-B-associated transcript 5) (hBAT5) (Monoacylglycerol lipase ABHD16A) (EC 3.1.1.23) (Protein G5)

Organism	Gene ID	UniProt ID
Human	7920	O95870
Mouse	193742	Q9Z1Q2
Rat	361796	Q6MG55

Cellular Localization	Membrane; Multi-pass membrane protein.
-----------------------	--

Validation Data



Western blot analysis of lysates from Caco-2 cell, primary antibody was diluted at 1:1000, 4 °C overnight. Dylight 800 secondary antibody was diluted at 1:10000, 37°C 1 hour.

Predicted band size: 63kDa

Observed band size: 63kDa

For Research Use Only