

## MS4A14 Rabbit mAb (AR1909)

### Key Features

Host Species:	Rabbit
Reactivity:	Human, Mouse, Rat
Applications:	WB
Isotype:	IgG, Kappa
MW:	76kDa (Calculated) 76kDa (Observed)

### Recommended Dilution Ratios

WB:	1:1000-5000
-----	-------------

### Storage

-15°C to -25°C/1 year (Do not lower than -25°C)

### Basic Information

Clonality	Monoclonal
-----------	------------

### Immunogen Information

Specificity	Endogenous
-------------	------------

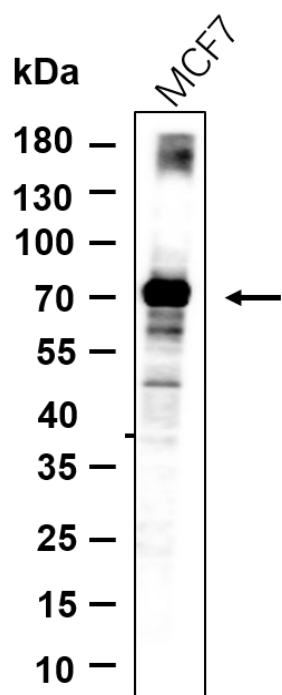
### Target Information

Gene name	MS4A14, MS4A13, MS4A16
Protein Name	Membrane-spanning 4-domains subfamily A member 14 (Testis development protein NYDSP21)

Organism	Gene ID	UniProt ID
Human	84689	Q96JA4

Cellular Localization	Membrane; Multi-pass membrane protein.
-----------------------	--

## Validation Data



Western blot analysis of lysates from MCF7 cell, primary antibody was diluted at 1:1000, 4 °C overnight. Dylight 800 secondary antibody was diluted at 1:10000, 37°C 1hour.

For Research Use Only