

CDIN1 Rabbit mAb (AR1910)

Key Features

Host Species:	Rabbit
Reactivity:	Human, Mouse, Rat
Applications:	WB
Isotype:	IgG, Kappa
MW:	32kDa (Calculated) 32kDa (Observed)

Recommended Dilution Ratios

WB:	1:1000-5000
-----	-------------

Storage	-15°C to -25°C/1 year (Do not lower than -25°C)
---------	---

Basic Information

Clonality	Monoclonal
-----------	------------

Immunogen Information

Specificity	Endogenous
-------------	------------

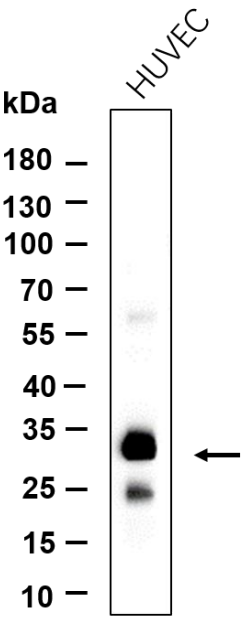
Target Information

Gene name	CDIN1, C15orf41
Protein Name	CDAN1-interacting nuclease 1 (Protein HH114)

Organism	Gene ID	UniProt ID
Human	84529	Q9Y2V0
Mouse	399568	Q3U4G0

Cellular Localization	Nucleus, Cytoplasm. Note: Mainly nuclear.
-----------------------	---

Validation Data



Western blot analysis of lysates from HUVEC cell, primary antibody was diluted at 1:1000, 4 °C overnight. Dylight 800 secondary antibody was diluted at 1:10000, 37°C 1hour.

For Research Use Only