

KCTD21 Rabbit mAb (AR1908)

Key Features

Host Species:	Rabbit
Reactivity:	Human, Mouse, Rat
Applications:	WB, FC
Isotype:	IgG, Kappa
MW:	30kDa (Calculated) 30kDa (Observed)

Recommended Dilution Ratios

WB:	1:1000-5000
FC:	1:100-500

Storage

-15°C to -25°C/1 year (Do not lower than -25°C)

Basic Information

Clonality	Monoclonal
-----------	------------

Immunogen Information

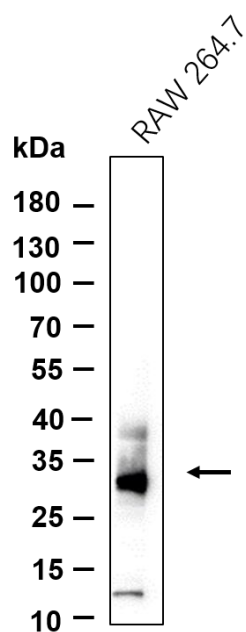
Specificity	Endogenous
-------------	------------

Target Information

Gene name	KCTD21
Protein Name	BTB/POZ domain-containing protein KCTD21 (KCASH2 protein) (Potassium channel tetramerization domain-containing protein 21)

	Organism	Gene ID	UniProt ID
	Human	283219	Q4G0X4
	Mouse	622320	Q3URF8
Tissue specificity	Highly expressed in cerebellum and brain. Expression is downregulated in medulloblastoma.		

Validation Data



Western blot analysis of lysates from RAW 264.7 cell, primary antibody was diluted at 1:1000, 4 °C overnight. Dylight 800 secondary antibody was diluted at 1:10000, 37°C 1hour.

For Research Use Only