

ZNF160 Rabbit mAb (AR1907)

Key Features

Host Species:	Rabbit
Reactivity:	Human,Mouse,Rat
Applications:	WB,FC
Isotype:	IgG,Kappa
MW:	94kD (Calculated) 94kD (Observed)

Recommended Dilution Ratios

WB:	1:1000-5000
FC:	1:100-500

Storage

-15°C to -25°C/1 year (Do not lower than -25°C)

Basic Information

Clonality	Monoclonal
-----------	------------

Immunogen Information

Specificity	Endogenous
-------------	------------

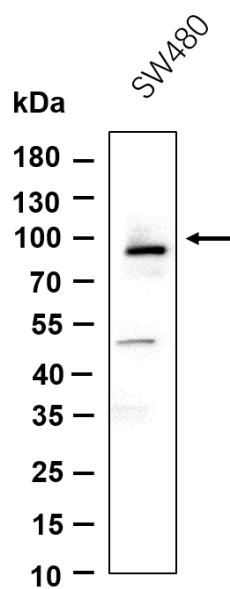
Target Information

Gene name	ZNF160, KIAA1611
Protein Name	Zinc fi nger protein 160 (Zinc fi nger protein HZF5) (Zinc fi nger protein Kr18) (HKr18)

Organism	Gene ID	UniProt ID
Human	90338	Q9HCG1

Cellular Localization	Nucleus.
Tissue specificity	Ubiquitous.

Validation Data



Western blot analysis of lysates from SW480 cell, primary antibody was diluted at 1:1000, 4 °C overnight. Dylight 800 secondary antibody was diluted at 1:10000, 37°C 1hour.

For Research Use Only