

p40-phox (Phospho Thr154) Rabbit pAb (AR20077)

Key Features

Host Species:	Rabbit
Reactivity:	Human,Mouse
Applications:	IHC,IF,ELISA
Isotype:	IgG
MW:	39kD (Calculated)

Recommended Dilution Ratios

IHC:	1:100-1:300
IF:	1:50-200
ELISA:	1:5000

Storage

-15°C to -25°C/1 year (Do not lower than -25°C)

Basic Information

Clonality	Polyclonal
-----------	------------

Immunogen Information

Specificity	Phospho-p40-phox (T154) Polyclonal Antibody detects endogenous levels of p40-phox protein only when phosphorylated at T154.The name of modified sites may be influenced by many factors, such as species (the modified site was not originally found in human samples) and the change of protein sequence (the previous protein sequence is incomplete, and the protein sequence may be prolonged with the development of protein sequencing technology). When naming, we will use the "numbers" in historical reference to keep the sites consistent with the reports. The antibody binds to the following modification sequence (lowercase letters are modification sites):PRtRK
-------------	--

Target Information

Gene name	NCF4
Protein Name	Neutrophil cytosol factor 4

Organism	Gene ID	UniProt ID
Human	4689	Q15080

Mouse

17972

P97369

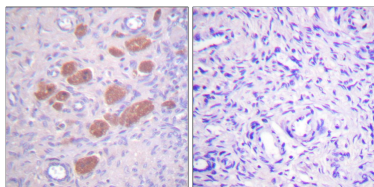
Cellular Localization

Cytoplasm, cytosol . Endosome membrane ; Peripheral membrane protein ; Cytoplasmic side . Membrane ; Peripheral membrane protein .

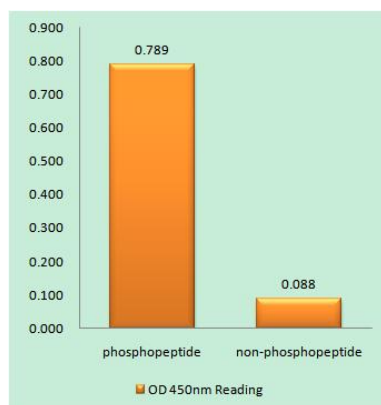
Tissue specificity

Expression is restricted to hematopoietic cells

Validation Data



Immunohistochemistry analysis of paraffin-embedded human ovary, using p40 phox (Phospho-Thr154) Antibody. The picture on the right is blocked with the phospho peptide.



Enzyme-Linked Immunosorbent Assay (Phospho-ELISA) for Immunogen Phosphopeptide (Phospho-left) and Non-Phosphopeptide (Phospho-right), using p40 phox (Phospho-Thr154) Antibody

For Research Use Only