

# Pyruvate Dehydrogenase E2 Rabbit mAb (AR1972)

## Key Features

Host Species:	Rabbit
Reactivity:	Human,Mouse,Rat
Applications:	WB,IHC,IF,IP,ELISA
Isotype:	IgG,Kappa
MW:	69 kD (Calculated) 69 kD (Observed)

## Recommended Dilution Ratios

IHC:	1:500-2000
WB:	1:2000-10000
IF:	1:200-1000
IP:	1:50-200
ELISA:	1:5000-20000

## Storage

-15°C to -25°C/1 year (Do not lower than -25°C)

## Basic Information

Clonality	Monoclonal
-----------	------------

## Immunogen Information

Specificity	Endogenous
-------------	------------

## Target Information

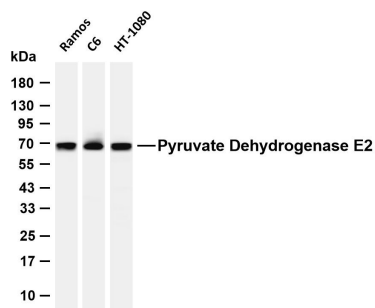
Gene name	DLAT
-----------	------

Organism	Gene ID	UniProt ID
Human	1737	P10515
Mouse		Q8BMF4

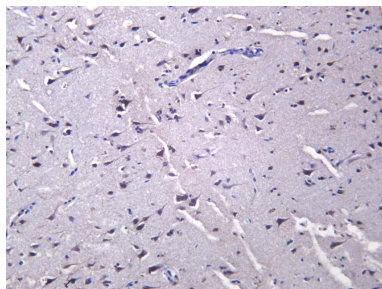
Cellular Localization	Mitochondrion matrix.
-----------------------	-----------------------

Tissue specificity	Heart,Keratinocyte carcinoma,Kidney,Liver,Placenta,Testis
--------------------	---

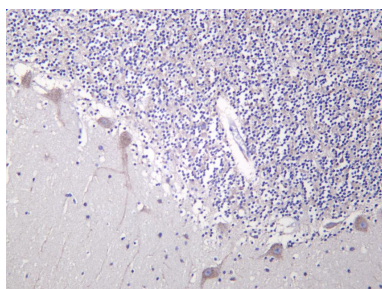
## Validation Data



Various whole cell lysates were separated by 4-20% SDS-PAGE, and the membrane was blotted with anti-Pyruvate Dehydrogenase E2 antibody. The HRP-conjugated Goat anti-Rabbit IgG (H + L) antibody was used to detect the antibody. Lane 1: Ramos Lane 2: C6 Lane 3: HT-1080 Predicted band size: 69kDa Observed band size: 69kDa



Human brain was stained with anti-Pyruvate Dehydrogenase E2 Rabbit antibody



Human cerebellum was stained with anti-Pyruvate Dehydrogenase E2 Rabbit antibody

For Research Use Only