

BRAT1 Rabbit mAb (AR1797)

Key Features

Host Species:	Rabbit
Reactivity:	Human
Applications:	WB,FC
Isotype:	IgG,Kappa
MW:	88kDa (Calculated) 88kDa (Observed)

Recommended Dilution Ratios

WB:	1:1000-5000
FC:	1:100-500

Storage

-15°C to -25°C/1 year (Do not lower than -25°C)

Basic Information

Clonality	Monoclonal
-----------	------------

Immunogen Information

Specificity	Endogenous
-------------	------------

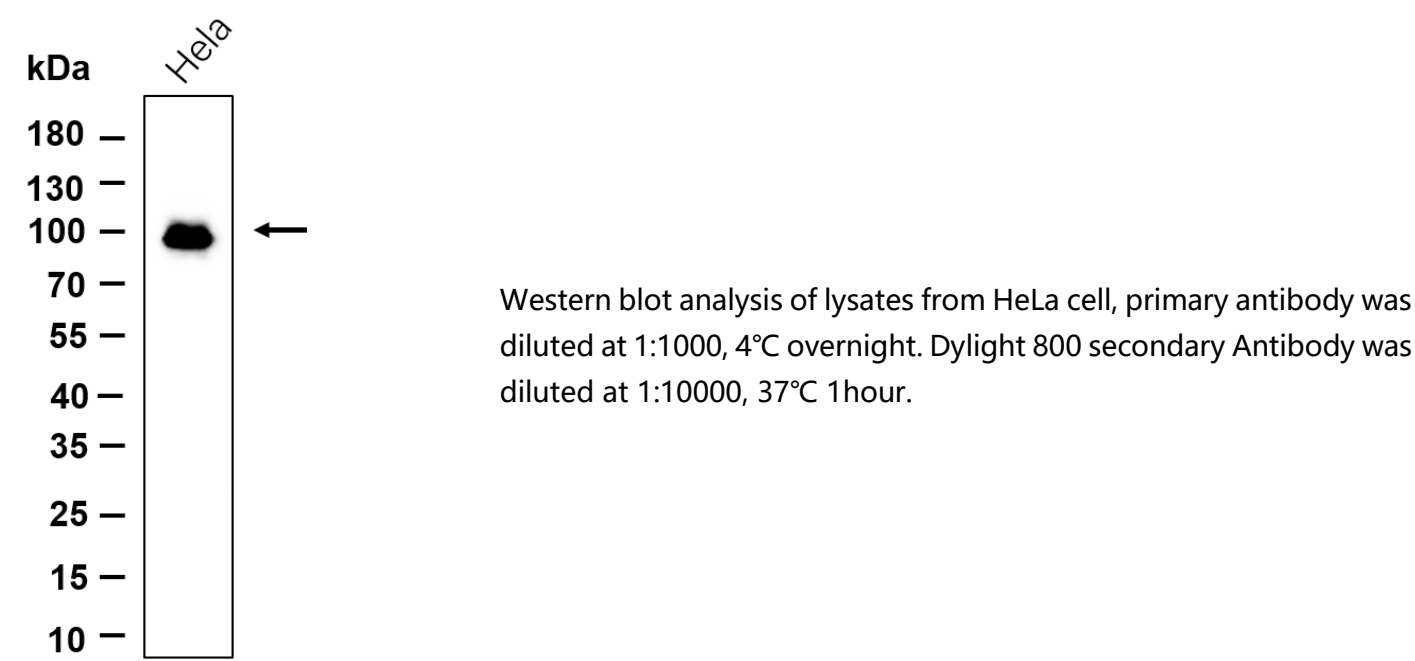
Target Information

Gene name	BRAT1; BAAT1; C7orf27
Protein Name	BRCA1-associated ATM activator 1; BRCA1-associated protein required for ATM activation protein 1;

Organism	Gene ID	UniProt ID
Human	221927	Q6PJG6

Cellular Localization	Nucleus. Cytoplasm. Note:Present at double strand breaks (DSBs)following ionizing radiation treatment. The ubiquitinated form localizes in the nucleus in a NDFIP1-dependent manner.
Tissue specificity	Ubiquitously expressed.

Validation Data



For Research Use Only