

Tubulin α Rabbit mAb (AR1832)

Key Features

Host Species:	Rabbit
Reactivity:	Human, Mouse, Rat
Applications:	WB, IHC, IF, ELISA
Isotype:	IgG, Kappa
MW:	50kDa (Calculated) 50kDa (Observed)

Recommended Dilution Ratios

WB:	1:2000-10000
IHC:	1:1000-5000
IF:	1:200-1000
ELISA:	1:5000-20000

Storage

-15°C to -25°C/1 year (Do not lower than -25°C)

Basic Information

Clonality	Monoclonal
-----------	------------

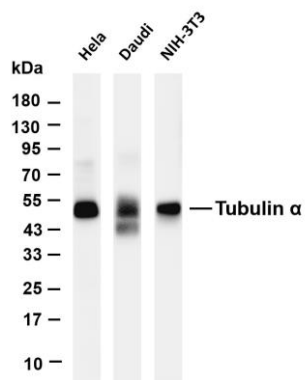
Immunogen Information

Specificity	Endogenous
-------------	------------

Target Information

Protein Name	Tubulin alpha		
	Organism	Gene ID	UniProt ID
	Human		P68366
Cellular Localization	Cytoplasm		

Validation Data



Various whole cell lysates were separated by 4-20% SDS-PAGE, and the membrane was blotted with anti-Tubulin α antibody. The HRP-conjugated Goat anti-Rabbit IgG(H + L) antibody was used to detect the antibody.

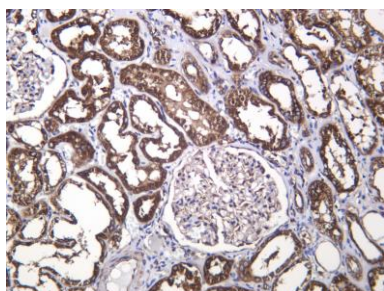
Lane 1: HeLa

Lane 2: Daudi

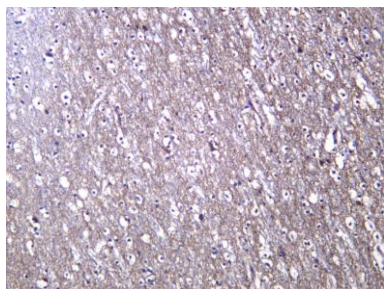
Lane 3: NIH-3T3

Predicted band size: 50kDa

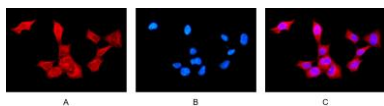
Observed band size: 50kDa



Human kidney was stained with anti-Tubulin α Rabbit antibody.



Human brain was stained with anti-Tubulin α Rabbit antibody.



Immunofluorescence analysis of HEK293.

Picture A: α Tubulin antibody (red).

Picture B: DAPI (blue).

Picture C: Merge of A+B

For Research Use Only