

# ULK1 (Phospho Ser757) Rabbit mAb (AR1829)

## Key Features

Host Species:	Rabbit
Reactivity:	Human,Mouse,Rat
Applications:	WB,IF,IP,ELISA
Isotype:	IgG,Kappa
MW:	113kDa (Calculated) 150kDa (Observed)

## Recommended Dilution Ratios

WB:	1:2000-10000
IF:	1:200-1000
IP:	1:50-200
ELISA:	1:5000-20000

## Storage

-15°C to -25°C/1 year (Do not lower than -25°C)

## Basic Information

Clonality	Monoclonal
-----------	------------

## Immunogen Information

Specificity	The antibody detects endogenous ULK1(Phospho AE13) protein.
-------------	---

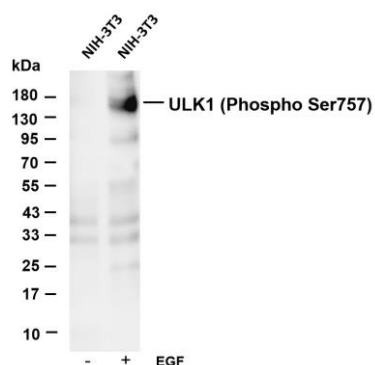
## Target Information

Gene name	ULK1
Protein Name	Serine/threonine-protein kinase ULK1

Organism	Gene ID	UniProt ID
Human	8408	O75385
Mouse	22241	O70405

Cellular Localization	Cytoplasm, cytosol. Preautophagosomal structure. Under starvation conditions, is localized to punctate structures primarily representing the isolation membrane that sequesters a portion of the cytoplasm resulting in the formation of an autophagosome.
Tissue specificity	Ubiquitously expressed. Detected in the following adult tissues: skeletal muscle, heart, pancreas, brain, placenta, liver, kidney, and lung.

## Validation Data



Various whole cell lysates were separated by 4-20% SDS-PAGE, and the membrane was blotted with anti-ULK1 (Phospho Ser757) antibody. The HRP conjugated Goat anti-Rabbit IgG(H + L) antibody was used to detect the antibody.

Lane 1: NIH-3T3

Lane 2: NIH-3T3 was treated with EGF( 100ng/mL) for 20 minutes

Predicted band size: 113kDa

Observed band size: 150kDa

For Research Use Only