

GSK3 $\alpha\beta$ (Phospho Tyr216/Tyr279) Rabbit mAb (AR1828)

Key Features

Host Species:	Rabbit
Reactivity:	Human, Mouse, Rat
Applications:	WB, IHC, IF, IP, ELISA
Isotype:	IgG, Kappa
MW:	47kDa, 51kDa (Calculated) 47kDa, 51kDa (Observed)

Recommended Dilution Ratios

WB:	1:2000-10000
IHC:	1:200-1000
IF:	1:200-1000
IP:	1:50-200
ELISA:	1:5000-20000

Storage

-15°C to -25°C/1 year (Do not lower than -25°C)

Basic Information

Clonality	Monoclonal
-----------	------------

Immunogen Information

Specificity	Endogenous
-------------	------------

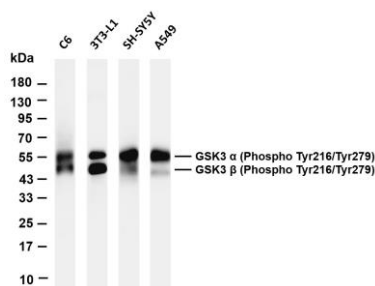
Target Information

Gene name	GSK3A/GSK3B
Protein Name	Glycogen synthase kinase-3 alpha/beta

Organism	Gene ID	UniProt ID
Human	2931	P49840; P49841
Mouse	606496; 56637	
Rat	50686; 84027	P18265; P18266

Cellular Localization	Cytoplasm
Tissue specificity	Brain, Eye, Foreskin, Lung, Pancreas, Platelet, Testis

Validation Data



Various whole cell lysates were separated by 4-20% SDS-PAGE, and the membrane was blotted with anti-GSK3 α/β (Phospho Tyr216/Tyr279) antibody. The HRP-conjugated Goat anti-Rabbit IgG(H + L) antibody was used to detect the antibody.

Lane 1: C6

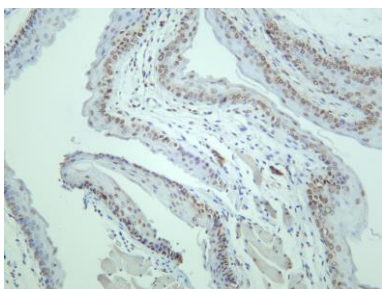
Lane 2: 3T3-L1

Lane 3: SH-SY5Y

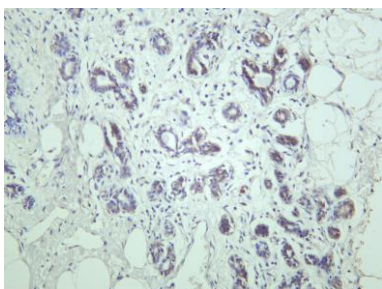
Lane 4: A549

Predicted band size: 47kDa, 51kDa

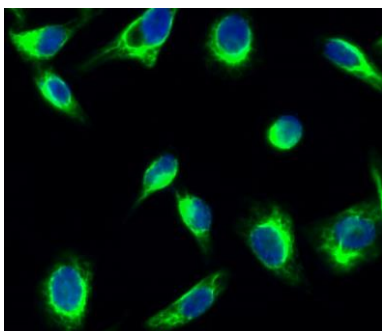
Observed band size: 47kDa, 51kDa



Mouse thyroid was stained with anti-GSK3 α/β (Phospho Tyr216/Tyr279) rabbit antibody.

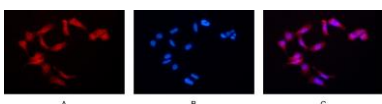


Human thyroid was stained with anti-GSK3 α/β (Phospho Tyr216/Tyr279) rabbit antibody.



Immunofluorescence analysis of HeLa cell.

1. GSK3α/β (phospho Tyr279/216) Monoclonal Antibody(green) was diluted at 1:200(4°C overnight).
2. Goat Anti Rabbit Alexa Fluor 488 was diluted at 1:1000(room temperature, 50min).
3. DAPI(blue) 10min



Immunofluorescence analysis of HEK293.

Picture A: GSK3 α/β antibody (red).

Picture B: DAPI (blue). Picture

C: Merge of A+B