

Smad1 Rabbit mAb (AR1825)

Key Features

Host Species:	Rabbit
Reactivity:	Human,Mouse,Rat
Applications:	WB,IF,ELISA
Isotype:	IgG,Kappa
MW:	52kDa (Calculated) 52kDa (Observed)

Recommended Dilution Ratios

WB:	1:2000-10000
IF:	1:200-1000
ELISA:	1:5000-20000

Storage

-15°C to -25°C/1 year (Do not lower than -25°C)

Basic Information

Clonality	Monoclonal
-----------	------------

Immunogen Information

Specificity	Endogenous
-------------	------------

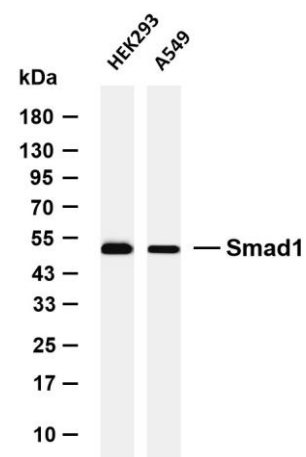
Target Information

Gene name	SMAD1
Protein Name	Mothers against decapentaplegic homolog 1

Organism	Gene ID	UniProt ID
Human	4086	Q15797
Mouse	17125	P70340
Rat		P97588

Cellular Localization	Cytoplasm. Nucleus. Cytoplasmic in the absence of ligand. Migrates to the nucleus when complexed with SMAD4 (PubMed:15647271). Co-localizes with LEMD3 at the nucleus inner membrane (PubMed:15647271). Exported from the nucleus to the cytoplasm when dephosphorylated (By similarity).
Tissue specificity	Ubiquitous. Highest expression seen in the heart and skeletal muscle.

Validation Data



Various whole cell lysates were separated by 4-8% SDS-PAGE, and the membrane was blotted with anti-Smad1 antibody. The HRP-conjugated Goat anti-Rabbit IgG (H + L) antibody was used to detect the antibody.

Lane 1: HEK293

Lane 2: A549

Predicted band size: 52kDa

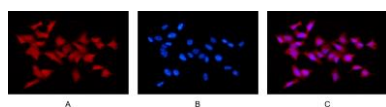
Observed band size: 52kDa

Immunofluorescence analysis of HEK293.

Picture A: Smad1 antibody (red).

Picture B: DAPI (blue).

Picture C: Merge of A+B



For Research Use Only