

## CREB-1 (Phospho Ser133) Rabbit mAb (AR1826)

### Key Features

Host Species:	Rabbit
Reactivity:	Human,Mouse,Rat
Applications:	WB,IHC,IF,IP,ELISA
Isotype:	IgG,Kappa
MW:	35kDa (Calculated) 43kDa (Observed)

### Recommended Dilution Ratios

WB:	1:2000-10000
IHC:	1:1000-4000
IF:	1:200-1000
IP:	1:50-200
ELISA:	1:5000-20000

### Storage

-15°C to -25°C/1 year (Do not lower than -25°C)

### Basic Information

Clonality	Monoclonal
-----------	------------

### Immunogen Information

Specificity	Phospho-CREB-1 (S133) Antibody detects endogenous levels of CREB-1 protein only when phosphorylated at S133. The name of modified sites may be influenced by many factors, such as species (the modified site was not originally found in human samples) and the change of protein sequence (the previous protein sequence is incomplete, and the protein sequence may be prolonged with the development of protein sequencing technology). When naming, we will use the "numbers" in historical reference to keep the sites consistent with the reports. The antibody binds to the following modification sequence (lowercase letters are modification sites):RPsYR
-------------	--

### Target Information

Gene name	CREB1
Protein Name	Cyclic AMP-responsive element-binding protein 1

Organism	Gene ID	UniProt ID
Human	1385	P16220
Mouse	12912	Q01147
Rat	81646	P15337

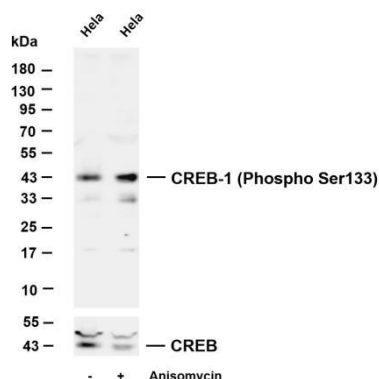
Cellular Localization

Nucleus.

Tissue specificity

Eye, Placenta, Spleen, Testis

## Validation Data



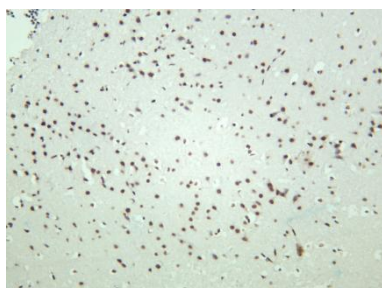
Various whole cell lysates were separated by 4-20% SDS-PAGE, and the membrane was blotted with anti-CREB-1 (Phospho Ser133) antibody. The HRP-conjugated Goat anti-Rabbit IgG(H + L) antibody was used to detect the antibody.

Lane 1: Hela

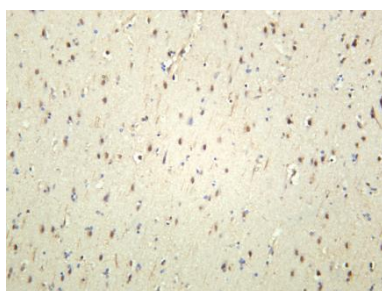
Lane 2: Hela was treated with Anisomycin(250 ng/ml) for 30 minutes

Predicted band size: 35kDa

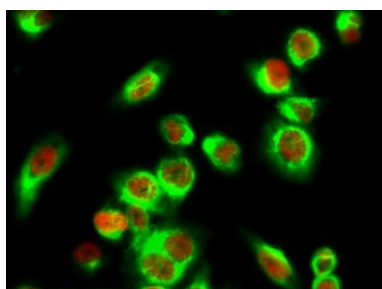
Observed band size: 43kDa



Rat brain was stained with anti-CREB-1 (Phospho Ser133) rabbit antibody.



Human brain was stained with anti-CREB-1 (Phospho Ser133) rabbit antibody.



Immunofluorescence analysis of HeLa cell.

1. CREB-1 (phospho Ser133) Monoclonal Antibody(red) was diluted at 1:200(4°C overnight).  $\beta$ -Tubulin Monoclonal Antibody (green) was diluted at 1:200(4°C overnight).
2. Goat Anti Rabbit Alexa Fluor 594 was diluted at 1:1000(room temperature, 50min). Goat Anti Mouse Alexa Fluor 488 was diluted at 1:1000(room temperature, 50min).

For Research Use Only