

OLIG2 Rabbit mAb (AR1824)

Key Features

Host Species:	Rabbit
Reactivity:	Human,Mouse,Rat
Applications:	WB,IHC,IF,ELISA
Isotype:	IgG,Kappa
MW:	32kDa (Calculated) 38kDa (Observed)

Recommended Dilution Ratios

WB:	1:2000-10000
IHC:	1:200-1000
IF:	1:200-1000
ELISA:	1:5000-20000

Storage

-15°C to -25°C/1 year (Do not lower than -25°C)

Basic Information

Clonality	Monoclonal
-----------	------------

Immunogen Information

Specificity	Endogenous
-------------	------------

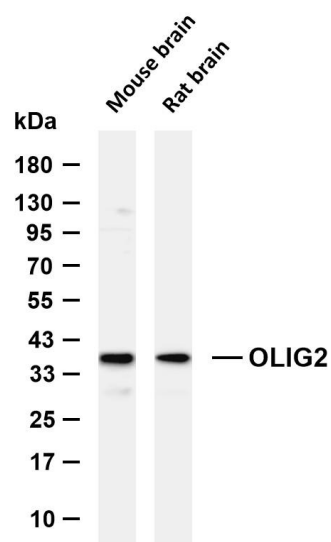
Target Information

Gene name	OLIG2 BHLHB1 BHLHE19 PRKCBP2 RACK17
Protein Name	OLIG2

Organism	Gene ID	UniProt ID
Human	10215	Q13516
Mouse	50913	Q9EQW6

Cellular Localization	Nucleus. Cytoplasm. The NLS contained in the bHLH domain could be masked in the native form and translocation to the nucleus could be mediated by interaction either with class E bHLH partner protein or with NKX2-2
Tissue specificity	Expressed in the brain, in oligodendrocytes. Strongly expressed in oligodendrogliomas, while expression is weak to moderate in astrocytomas. Expression in glioblastomas highly variable

Validation Data



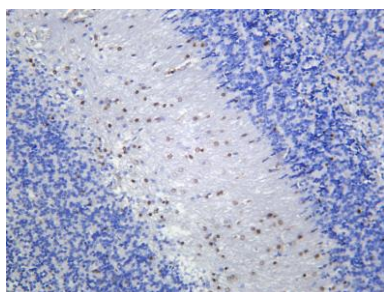
Various whole cell lysates were separated by 4-20% SDS-PAGE, and the membrane was blotted with anti-OLIG2 antibody. The HRP conjugated Goat anti-Rabbit IgG (H + L) antibody was used to detect the antibody.

Lane 1: Mouse brain

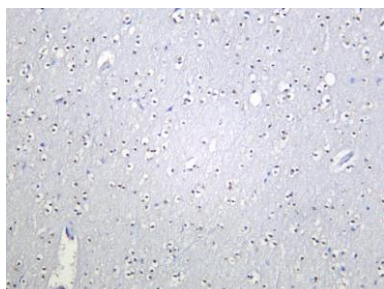
Lane 2: Rat brain

Predicted band size: 32kDa

Observed band size: 38kDa



Mouse brain was stained with anti-OLIG2 Rabbit antibody



Human brain was stained with anti-OLIG2 Rabbit antibody

For Research Use Only