

## Cofilin Rabbit mAb (AR1821)

### Key Features

|               |  |
|---------------|--|
| Host Species: | Rabbit                                 |
| Reactivity:   | Human, Mouse, Rat                      |
| Applications: | WB, IHC, IF, ELISA                     |
| Isotype:      | IgG, Kappa                             |
| MW:           | 19kDa (Calculated)<br>19kDa (Observed) |

### Recommended Dilution Ratios

|        |               |
|--------|---------------|
| WB:    | 1:2000-10000  |
| IHC:   | 1:20000-50000 |
| IF:    | 1:200-1000    |
| ELISA: | 1:5000-20000  |

### Storage

-15°C to -25°C/1 year (Do not lower than -25°C)

### Basic Information

|           |            |
|-----------|------------|
| Clonality | Monoclonal |
|-----------|------------|

### Immunogen Information

|             |            |
|-------------|------------|
| Specificity | Endogenous |
|-------------|------------|

### Target Information

|              |          |
|--------------|----------|
| Gene name    | CFL1 CFL |
| Protein Name | Cofilin  |

| Organism | Gene ID | UniProt ID |
|----------|---------|------------|
| Human    | 1072    | P23528     |
| Mouse    | 12631   | P18760     |
| Rat      | 29271   | P45592     |

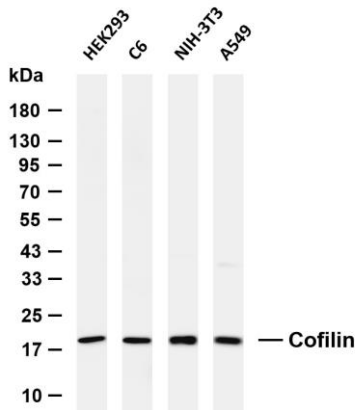
|                       |   |
|-----------------------|---|
| Cellular Localization | Nucleus matrix. Cytoplasm, cytoskeleton. Cell projection, ruffle membrane; Peripheral membrane protein; Cytoplasmic side. Cell projection, lamellipodium membrane; Peripheral membrane protein; Cytoplasmic side. Cell projection, lamellipodium. Cell projection, growth cone. Cell projection, axon. Colocalizes with the |
|-----------------------|---|

actin cytoskeleton in membrane ruffles and lamellipodia. Detected at the cleavage furrow and contractile ring during cytokinesis. Almost completely in nucleus in cells exposed to heat shock or 10% dimethyl sulfoxide.

Tissue specificity

Widely distributed in various tissues.

## Validation Data



Various whole cell lysates were separated by 4-20% SDS-PAGE, and the membrane was blotted with anti-Cofilin antibody. The HRP conjugated Goat anti-Rabbit IgG (H + L) antibody was used to detect the antibody.

Lane 1: HEK293

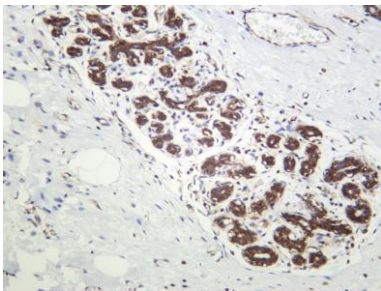
Lane 2: C6

Lane 3: NIH-3T3

Lane 4: A549

Predicted band size: 19kDa

Observed band size: 19kDa



Human breast carcinoma was stained with anti-Cofilin Rabbit Antibody.

For Research Use Only