

pan Cadherin Rabbit mAb (AR1820)

Key Features

Host Species:	Rabbit
Reactivity:	Human, Mouse, Rat
Applications:	WB, IHC, IF, IP, ELISA
Isotype:	IgG, Kappa
MW:	88-100kDa (Calculated) 130kDa (Observed)

Recommended Dilution Ratios

WB:	1:2000-10000
IHC:	1:1000-4000
IF:	1:200-1000
IP:	1:50-200
ELISA:	1:5000-20000

Storage

-15°C to -25°C/1 year (Do not lower than -25°C)

Basic Information

Clonality	Monoclonal
-----------	------------

Immunogen Information

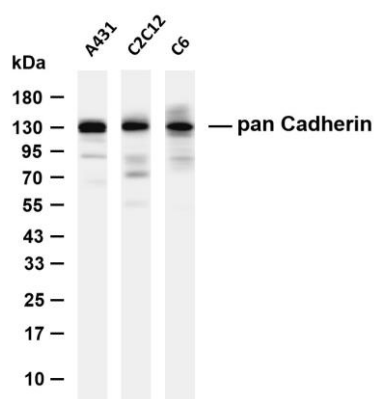
Specificity	Endogenous
-------------	------------

Target Information

Gene name	CDH1/CDH2/CDH4
Protein Name	cadherin

	Organism	Gene ID	UniProt ID
	Human		P55285; P22223; P12830; P55283
Cellular Localization	Membranous		
Tissue specificity	Non-neural epithelial tissues.		

Validation Data



Various whole cell lysates were separated by 4-20% SDS-PAGE, and the membrane was blotted with anti-pan Cadherin antibody. The HRP conjugated Goat anti-Rabbit IgG (H + L) antibody was used to detect the antibody.

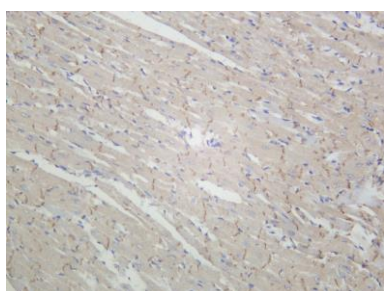
Lane 1: A431

Lane 2: C2C12

Lane 3: C6

Predicted band size: 88-100kDa

Observed band size: 130kDa



Mouse cardiac muscle was stained with anti-pan Cadherin Rabbit antibody.

For Research Use Only