

Importin 9 Rabbit mAb (AR1818)

Key Features

| | |
|---------------|--|
| Host Species: | Rabbit |
| Reactivity: | Human, Mouse |
| Applications: | WB, IHC, IF, ELISA |
| Isotype: | IgG, Kappa |
| MW: | 116kDa (Calculated) 116kDa (Observed) |

Recommended Dilution Ratios

| | |
|--------|--------------|
| IHC: | 1:200-1000 |
| WB: | 1:2000-10000 |
| IF: | 1:200-1000 |
| ELISA: | 1:5000-20000 |

Storage

-15°C to -25°C/1 year (Do not lower than -25°C)

Basic Information

| | |
|-----------|------------|
| Clonality | Monoclonal |
|-----------|------------|

Immunogen Information

| | |
|-------------|------------|
| Specificity | Endogenous |
|-------------|------------|

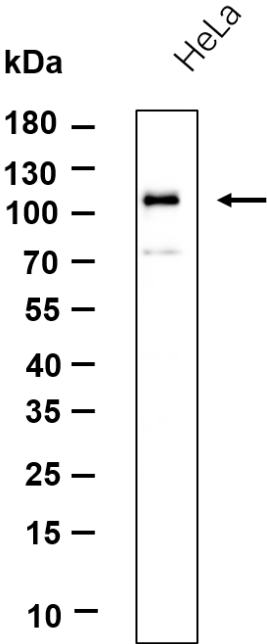
Target Information

| | |
|--------------|--|
| Gene name | IPO9 IMP9 KIAA1192 RANBP9 HSPC273 |
| Protein Name | Importin-9 (Imp9) (Ran-binding protein 9) (RanBP9) |

| Organism | Gene ID | UniProt ID |
|----------|---------|------------|
| Human | 55705 | Q96P70 |
| Mouse | | Q91YE6 |

| | |
|-----------------------|--|
| Cellular Localization | Cytoplasm. Nucleus. |
| Tissue specificity | Amygdala, B-cell lymphoma, Brain, Placenta, Umbilical cord blood |

Validation Data



Western blot analysis of lysates from HeLa cell, primary antibody was diluted at 1:1000, 4°C overnight. Dylight 800 secondary antibody was diluted at 1:10000, 37°C 1 hour.

For Research Use Only