

## FPGS Rabbit mAb (AR1817)

### Key Features

Host Species:	Rabbit
Reactivity:	Human,Mouse,Rat
Applications:	WB,FC
Isotype:	IgG,Kappa
MW:	65kDa (Calculated) 65kDa (Observed)

### Recommended Dilution Ratios

WB:	1:1000-5000
IF:	1:100-500

### Storage

-15°C to -25°C/1 year (Do not lower than -25°C)

### Basic Information

Clonality	Monoclonal
-----------	------------

### Immunogen Information

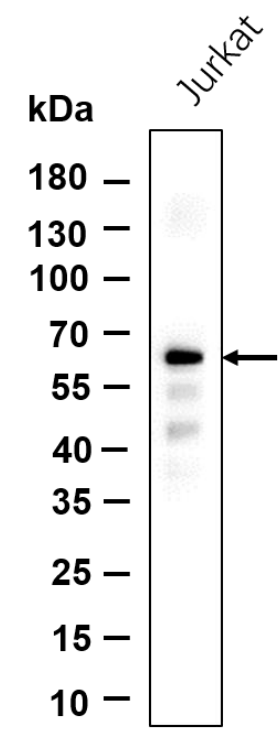
Specificity	Endogenous
-------------	------------

### Target Information

Gene name	FPGS
Protein Name	Folypolyglutamate synthase, mitochondrial.

	Organism	Gene ID	UniProt ID
	Human	2356	Q05932
	Mouse	14287	P48760
Cellular Localization	[Isoform 1]: Mitochondrion inner membrane. Mitochondrion matrix; [Isoform 2]: Cytoplasm.		

Validation Data



Western blot analysis of lysates from Jurkat cell, primary antibody was diluted at 1:1000, 4°C overnight. Dylight 800 secondary Antibody was diluted at 1:10000, 37°C 1hour.

For Research Use Only