

Glyt2 Rabbit mAb (AR1816)

Key Features

Host Species:	Rabbit
Reactivity:	Human, Mouse, Rat
Applications:	WB
Isotype:	IgG, Kappa
MW:	87kDa (Calculated) 87kDa (Observed)

Recommended Dilution Ratios

WB:	1:1000-5000
-----	-------------

Storage

-15°C to -25°C/1 year (Do not lower than -25°C)

Basic Information

Clonality	Monoclonal
-----------	------------

Immunogen Information

Specificity	Endogenous
-------------	------------

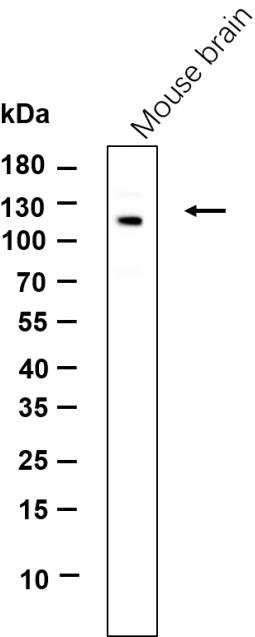
Target Information

Gene name	SLC6A5, GLYT2, NET1
Protein Name	Sodium- and chloride-dependent glycine transporter 2 (GlyT-2) (GlyT2) (Solute carrier family 6 member 5)

Organism	Gene ID	UniProt ID
Human	9152	Q9Y345
Mouse	104245	Q761V0
Rat	171148	P58295

Cellular Localization	Cell membrane; Multi-pass membrane protein.
Tissue specificity	Expressed in medulla, and to a lesser extent in spinal cord and cerebellum.

Validation Data



Western blot analysis of lysates from Mouse brain cell, primary antibody was diluted at 1:1000, 4°C overnight. DyLight 800 secondary antibody was diluted at 1:10000, 37°C 1hour.

For Research Use Only