

## Azurocidin Rabbit mAb (AR1815)

### Key Features

Host Species:	Rabbit
Reactivity:	Human
Applications:	WB
Isotype:	IgG,Kappa
MW:	27kDa (Calculated) 27kDa (Observed)

### Recommended Dilution Ratios

WB:	1:1000-5000
-----	-------------

### Storage

-15°C to -25°C/1 year (Do not lower than -25°C)

### Basic Information

Clonality	Monoclonal
-----------	------------

### Immunogen Information

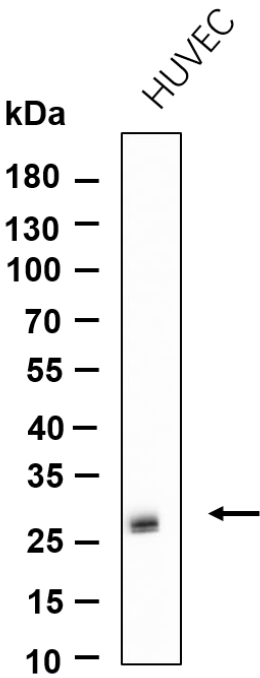
Specificity	Endogenous
-------------	------------

### Target Information

Gene name	AZU1
Protein Name	Azurocidin (Cationic antimicrobial protein CAP37) (Heparin-binding protein) (HBP)

	Organism	Gene ID	UniProt ID
	Human	566	P20160
Cellular Localization	Cytoplasmic granule membrane; Peripheral membrane protein; Cytoplasmic side. Localizes to azurophil granules of neutrophil granulocytes. Also called primary granules, these specialized lysosomes of the neutrophil formed early during promyelocyte development store antibacterial proteins and peptides.		
Tissue specificity	Leukocyte, Liver, Lung, Neutrophil.		

Validation Data



Western blot analysis of lysates from HUVEC cell, primary antibody was diluted at 1:1000, 4°C overnight. Dylight 800 secondary antibody was diluted at 1:10000, 37°C 1hour.

For Research Use Only