

# Methionyl Aminopeptidase 1 Rabbit mAb (AR1814)

## Key Features

Host Species:	Rabbit
Reactivity:	Human,Mouse,Rat
Applications:	WB,IHC,IF,ELISA
Isotype:	IgG,Kappa
MW:	43kDa (Calculated) 43kDa (Observed)

## Recommended Dilution Ratios

IHC:	1:200-1000
WB:	1:2000-10000
IF:	1:200-1000
ELISA	1:5000-20000

**Storage** -15°C to -25°C/1 year (Do not lower than -25°C)

## Basic Information

Clonality Monoclonal

## Immunogen Information

Specificity Endogenous

## Target Information

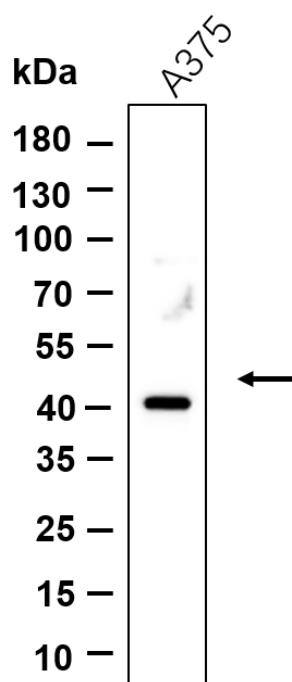
Gene name METAP1 KIAA0094  
Protein Name Methionine aminopeptidase 1 (MAP 1) (MetAP 1) (Peptidase M 1)

Organism	Gene ID	UniProt ID
Human	23173	P53582
Mouse		Q8BP48

Cellular Localization Cytoplasm.

Tissue specificity Bone marrow, Placenta, Testis

## Validation Data



Western blot analysis of lysates from A375 cell, primary antibody was diluted at 1:1000, 4 °C overnight, Dylight 800 secondary antibody was diluted at 1:10000, 37°C 1 hour.

For Research Use Only