

SLBP Rabbit mAb (AR1812)

Key Features

Host Species:	Rabbit
Reactivity:	Human
Applications:	WB,IHC,IF,ELISA
Isotype:	IgG,Kappa
MW:	31kDa (Calculated) 31kDa (Observed)

Recommended Dilution Ratios

IHC:	1:200-1000
WB:	1:2000-10000
IF:	1:200-1000
ELISA:	1:5000-20000

Storage

-15°C to -25°C/1 year (Do not lower than -25°C)

Basic Information

Clonality	Monoclonal
-----------	------------

Immunogen Information

Specificity	Endogenous
-------------	------------

Target Information

Gene name	SLBP, HBP
Protein Name	Histone RNA hairpin-binding protein (Histone stem-loop-binding protein)

Organism	Gene ID	UniProt ID
Human	7884	Q14493

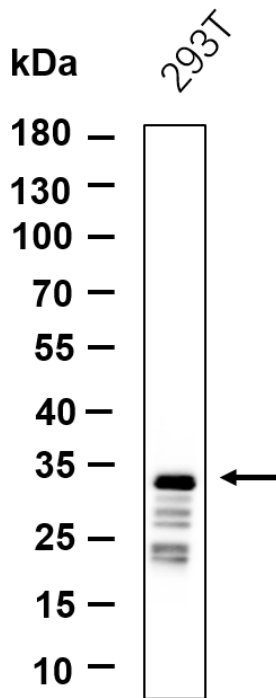
Cellular Localization	Cytoplasm. Nucleus. Note:Polyribosome-associated. Localizes predominantly in the nucleus at the G1/G2 phases and the beginning of S phase (PubMed:12588979). Through the S phase, partially redistributes to the cytoplasm (PubMed:12588979). Binding to histone mRNA is necessary for cytoplasmic localization (PubMed:12588979). Shuttles between the nucleus and the cytoplasm (PubMed:15829567). Imported in the nucleus by the
-----------------------	---

Importin alpha/Importin beta receptor (PubMed:15829567).

Tissue specificity

Widely expressed.

Validation Data



Western blot analysis of lysates from 293T cell, primary antibody was diluted at 1:1000, 4°C overnight. Dylight 800 secondary antibody was diluted at 1:10000, 37°C 1 hour.

For Research Use Only