

CKS2 Rabbit mAb (AR1811)

Key Features

Host Species:	Rabbit
Reactivity:	Human, Mouse, Rat
Applications:	WB, IHC
Isotype:	IgG, Kappa
MW:	10kDa (Calculated) 8kDa (Observed)

Recommended Dilution Ratios

IHC:	1:200-1000
WB:	1:1000-5000

Storage

-15°C to -25°C/1 year (Do not lower than -25°C)

Basic Information

Clonality	Monoclonal
-----------	------------

Immunogen Information

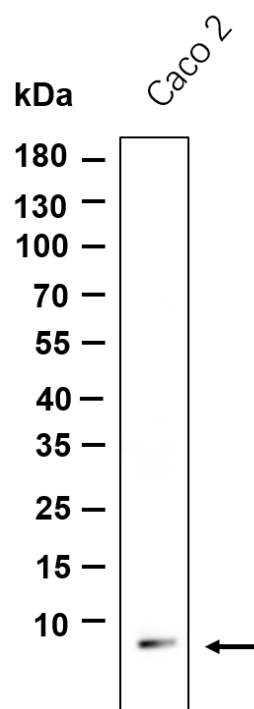
Specificity	Endogenous
-------------	------------

Target Information

Gene name	CKS2
Protein Name	Cyclin-dependent kinases regulatory subunit 2

	Organism	Gene ID	UniProt ID	
	Human	1164	P33552	
	Mouse	66197	P56390	
Cellular Localization	cyclin-dependent protein kinase holoenzyme complex, SCF ubiquitin ligase complex			
Tissue specificity	Lung			

Validation Data



Western blot analysis of lysates from Caco-2 cell, primary antibody was diluted at 1:1000, 4°C overnight. Dylight 800 secondary antibody was diluted at 1:10000, 37°C 1hour.

For Research Use Only