

## ZWINT Rabbit mAb (AR1810)

### Key Features

Host Species:	Rabbit
Reactivity:	Human
Applications:	WB,IHC,FC
Isotype:	IgG,Kappa
MW:	31kDa (Calculated) 31kDa (Observed)

### Recommended Dilution Ratios

IHC:	1:200-1000
WB:	1:1000-5000
FC:	1:100-500

**Storage** -15°C to -25°C/1 year (Do not lower than -25°C)

### Basic Information

Clonality Monoclonal

### Immunogen Information

Specificity Endogenous

### Target Information

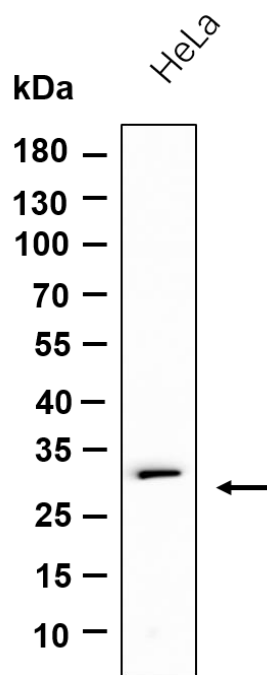
Gene name ZWINT

Protein Name ZW10 interactor (ZW10-interacting protein 1) (Zwint-1)

Organism	Gene ID	UniProt ID
Human	11130	O95229
Mouse	52696	Q9CQU5
Rat	257644	Q8VIL3

Cellular Localization Nucleus. Chromosome, centromere, kinetochore. Localizes to kinetochores from late prophase to anaphase.

## Validation Data



Western blot analysis of lysates from HeLa cell, primary antibody was diluted at 1:1000, 4°C overnight. Dylight 800 secondary antibody was diluted at 1:10000, 37°C 1 hour.

For Research Use Only