

CLEC2B Rabbit mAb (AR1809)

Key Features

Host Species:	Rabbit
Reactivity:	Human
Applications:	WB,IHC,IF,ELISA
Isotype:	IgG,Kappa
MW:	17kDa (Calculated) 17kDa (Observed)

Recommended Dilution Ratios

IHC:	1:200-1000
WB:	1:2000-10000
IF:	1:200-1000
ELISA:	1:5000-20000

Storage

-15°C to -25°C/1 year (Do not lower than -25°C)

Basic Information

Clonality	Monoclonal
-----------	------------

Immunogen Information

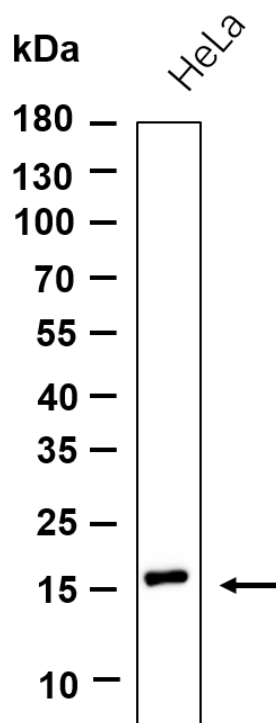
Specificity	Endogenous
-------------	------------

Target Information

Gene name	CLEC2B, AICL, CLECSF2, IFNKG1
Protein Name	C-type lectin domain family 2 member B (Activation-induced C-type lectin) (C-type lectin superfamily member 2) (IFN-alpha-2b-inducing-related protein 1)

	Organism	Gene ID	UniProt ID
	Human	9976	Q92478
Cellular Localization	Cell membrane; Single-pass type II membrane protein. Golgi apparatus membrane. Note:Resting NK cells contain intracellular stores of CLEC2B associated with the Golgi complex.		
Tissue specificity	Expressed preferentially in lymphoid tissues, and in most hematopoietic cell types.		

Validation Data



Western blot analysis of lysates from HeLa cell, primary antibody was diluted at 1:1000, 4 °C overnight, Dylight 800 secondary antibody was diluted at 1:10000, 37°C 1hour.

For Research Use Only