

## RCN1 Rabbit mAb (AR1807)

### Key Features

Host Species:	Rabbit
Reactivity:	Human,Mouse,Rat
Applications:	WB,IHC,IF,ELISA
Isotype:	IgG,Kappa
MW:	39kDa (Calculated) 36kDa (Observed)

### Recommended Dilution Ratios

IHC:	1:200-1000
WB:	1:2000-10000
IF:	1:200-1000
ELISA:	1:5000-20000

### Storage

-15°C to -25°C/1 year (Do not lower than -25°C)

### Basic Information

Clonality	Monoclonal
-----------	------------

### Immunogen Information

Specificity	Endogenous
-------------	------------

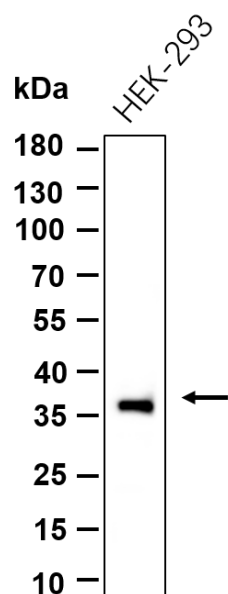
### Target Information

Gene name	RCN1 RCN
Protein Name	Reticulocalbin-1

Organism	Gene ID	UniProt ID
Human	5954	Q15293
Mouse	19672	Q05186

Cellular Localization	Endoplasmic reticulum lumen.
-----------------------	------------------------------

## Validation Data



Western blot analysis of lysates from HEK-293 cell, primary antibody was diluted at 1:1000, 4 °C overnight. Dylight 800 secondary antibody was diluted at 1:10000, 37°C 1hour.

For Research Use Only