

## TMEM43 Rabbit mAb (AR1804)

### Key Features

Host Species:	Rabbit
Reactivity:	Human,Mouse,Rat
Applications:	WB,IHC
Isotype:	IgG,Kappa
MW:	45kDa (Calculated) 45kDa (Observed)

### Recommended Dilution Ratios

IHC:	1:200-1000
WB:	1:1000-5000

### Storage

-15°C to -25°C/1 year (Do not lower than -25°C)

### Basic Information

Clonality	Monoclonal
-----------	------------

### Immunogen Information

Specificity	Endogenous
-------------	------------

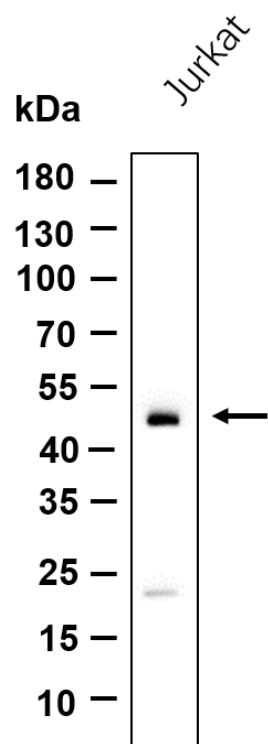
### Target Information

Gene name	TMEM43, UNQ2564/PRO6244
Protein Name	Transmembrane protein 43 (Protein LUMA)

Organism	Gene ID	UniProt ID
Human	79188	Q9BTV4
Mouse	74122	Q9DBS1
Rat	362401	Q5XIP9

Cellular Localization	Endoplasmic reticulum membrane. Nucleus inner membrane; Multi-pass membrane protein. Cell membrane. Note:Retained in the inner nuclear membrane through interaction with EMD and A- and B-lamins. The N- and C-termini are oriented towards the nucleoplasm. The majority of the hydrophilic domain resides in the endoplasmic reticulum lumen (By similarity).
Tissue specificity	Highest expression in placenta. Also found at lower levels in heart, ovary, spleen, small intestine, thymus, prostate and testis.

Validation Data



Western blot analysis of lysates from Jurkat cell, primary antibody was diluted at 1:1000, 4°C overnight. Dylight 800 secondary antibody was diluted at 1:10000, 37°C 1 hour.

For Research Use Only