

PDE1B Rabbit mAb (AR1803)

Key Features

| | |
|---------------|--|
| Host Species: | Rabbit |
| Reactivity: | Human,Mouse,Rat |
| Applications: | WB,IHC |
| Isotype: | IgG,Kappa |
| MW: | 61kDa (Calculated) 61kDa (Observed) |

Recommended Dilution Ratios

| | |
|------|-------------|
| IHC: | 1:200-1000 |
| WB: | 1:1000-5000 |

Storage

-15°C to -25°C/1 year (Do not lower than -25°C)

Basic Information

| | |
|-----------|------------|
| Clonality | Monoclonal |
|-----------|------------|

Immunogen Information

| | |
|-------------|------------|
| Specificity | Endogenous |
|-------------|------------|

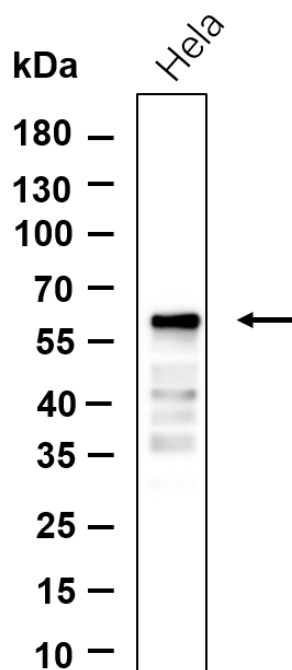
Target Information

| | |
|--------------|---|
| Gene name | PDE1B PDE1B1 PDES1B |
| Protein Name | Calcium/calmodulin-dependent 3',5'-cyclic nucleotide phosphodiesterase 1B (Cam-PDE 1B) (63 kDa Cam-PDE) |

| Organism | Gene ID | UniProt ID |
|----------|---------|------------|
| Human | 5153 | Q01064 |
| Mouse | | Q01065 |
| Rat | | Q01066 |

| | |
|-----------------------|------------------------------|
| Cellular Localization | Cytoplasm, cytosol. |
| Tissue specificity | Brain, Human uterus, Testis. |

Validation Data



Western blot analysis of lysates from HeLa cell, primary antibody was diluted at 1:1000, 4°C overnight. Dylight 800 secondary antibody was diluted at 1:10000, 37°C 1 hour.

For Research Use Only