

ORP1 Rabbit mAb (AR1802)

Key Features

Host Species:	Rabbit
Reactivity:	Human,Mouse,Rat
Applications:	WB,IF,ELISA
Isotype:	IgG,Kappa
MW:	108kDa (Calculated) 108kDa (Observed)

Recommended Dilution Ratios

WB:	1:1000-5000
IF:	1:200-1000
ELISA:	1:5000-20000

Storage

-15°C to -25°C/1 year (Do not lower than -25°C)

Basic Information

Clonality	Monoclonal
-----------	------------

Immunogen Information

Specificity	Endogenous
-------------	------------

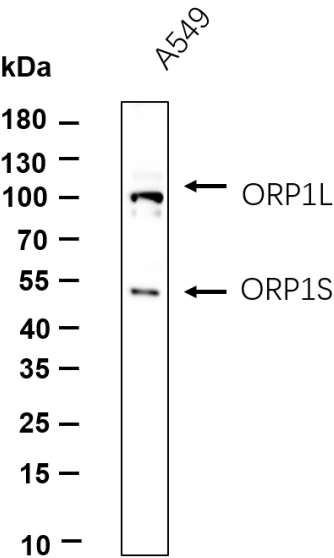
Target Information

Gene name	OSBPL1A ORP1 OSBP8 OSBPL1 OSBPL1B
Protein Name	OSBL1

Organism	Gene ID	UniProt ID
Human	114876	Q9BXW6
Mouse	64291	Q91XL9
Rat	259221	Q8K4M9

Cellular Localization	Late endosome. Colocalizes with RAB7A, RAB9A and LAMP1 in late endosomes.
Tissue specificity	Bone, Brain, Embryo, Epithelium, Kidney, Pancreas, Testicle

Validation Data



Western blot analysis of lysates from A549 cell, primary antibody was diluted at 1:1000, 4°C overnight. Dylight 800 secondary antibody was diluted at 1:10000, 37°C 1 hour.

For Research Use Only