

## FRAT1 Rabbit mAb (AR1801)

### Key Features

Host Species:	Rabbit
Reactivity:	Human,Mouse,Rat
Applications:	WB,IF,ELISA
Isotype:	IgG,Kappa
MW:	30kDa (Calculated) 30kDa (Observed)

### Recommended Dilution Ratios

WB:	1:1000-5000
IF:	1:200-1000
ELISA:	1:5000-20000

### Storage

-15°C to -25°C/1 year (Do not lower than -25°C)

### Basic Information

Clonality	Monoclonal
-----------	------------

### Immunogen Information

Specificity	Endogenous
-------------	------------

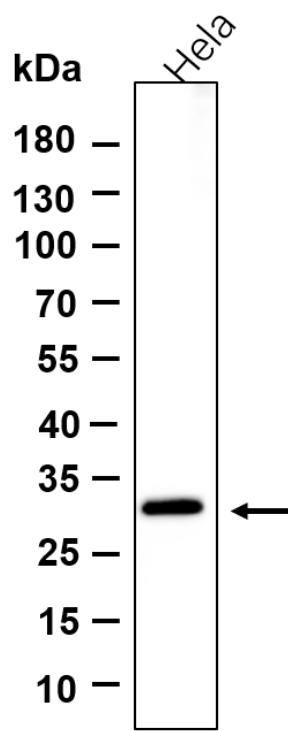
### Target Information

Gene name	FRAT1
Protein Name	Proto-oncogene FRAT1 (Frequently rearranged in advanced T-cell lymphomas 1) (FRAT-1)

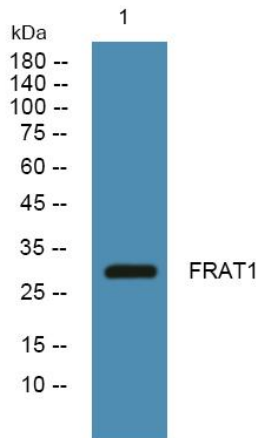
Organism	Gene ID	UniProt ID
Human	10023	Q92837
Mouse		P70339

Cellular Localization	Cytoplasm.
Tissue specificity	Lung, Testis.

Validation Data



Western blot analysis of lysates from HeLa cell, primary antibody was diluted at 1:1000, 4°C overnight. Dylight 800 secondary antibody was diluted at 1:10000, 37°C 1 hour.



Western blot analysis of lysates from A431 cells, primary antibody was diluted at 1:1000, 4°C overnight

For Research Use Only